

# Grain Monitoring Program

## Weekly Performance Update

September 12, 2023

For Grain Week 05 (2023-24 CY)

### Summary

	Week 05	Week 04	Var. from Last Year
--	---------	---------	---------------------

#### 1. Stocks in Store ('000 tonnes)

Country Elevators	↑ 3,067.7	2,388.4	-8%
% of Working Capacity	56%	43%	
Terminal Elevators	↓ 800.4	931.9	11%
% of Working Capacity	42%	48%	

#### 2. Country Deliveries ('000 tonnes)

Country Deliveries	↑ 1,567.5	853.7	0%
--------------------	-----------	-------	----

#### 3. Railcar Supply to Western Ports (Cars)

CN Allocation Plan	↑ 3,521	2,347	62%
CN Unloads	↓ 2,858	3,122	32%
CPKC Allocation Plan	n/a	n/a	n/a
CPKC Unloads	↑ 2,500	1,840	2%

#### 4. Port Performance (Cars)

Total Weekly Unloads	↑ 5,358	4,962	16%
4-Week Rolling Average	↑ 4,710	4,539	n/a
Var. to 4-Week Rolling Average	↑ 14%	9%	n/a
YTD Unloads	↑ 23,515	18,157	34%
Weekly Out-of-Car Time	↑ 9.7%	9.5%	17.2%

#### 5. Terminal Shipments Year-to-Date ('000 tonnes)

Vancouver	↑ 1,773.7	1,302.4	36%
Prince Rupert	— 77.0	77.0	50%
Churchill	— 0.0	0.0	n/a
Thunder Bay	↑ 688.6	531.0	30%
Total Western Canada	2,539.3	1,910.4	35%

#### 6. Vessels as at Sep 10, 2023

		Week 06	Week 05	Var. from Last Year
Vancouver	Vessel Lineup in port	↓ 19	20	-14%
	Vessels Cleared	— 10	10	233%
	Vessels Arrived	↑ 9	7	-36%
Pr. Rupert	Vessel Lineup in port	↑ 1	0	n/a
	Vessels Cleared	— 0	0	n/a
	Vessels Arrived	↑ 1	0	n/a

#### Vessels Inbound Sep 11, 2023 to Sep 17, 2023 (Week 07)

Vancouver	14
Prince Rupert	0

#### 1. Stocks in Store: (Page 2)

- Country stocks increased to 3.07 MMT in Week 05 utilizing 56% of the system's working capacity. Space in primary elevators is good.
- Total western port terminal stocks decreased to 0.80 MMT in Week 05, utilizing 42% of the working capacity.

#### 2. Country Deliveries: (Page 2)

- Deliveries to primary elevators were 1.57 MMT in Week 05.

#### 3. Railcar Supply: (Page 3)

- Railcar allocation plans are supplied by CN to Week 06 2023-24 (see page 3 for details).

#### 4. Port Performance: (Page 4)

- Total western port unloads were 14% higher than the 4-week moving average and 16% higher than Week 05 last year.
- West Coast unloads were 4,044 cars (Vancouver 4,044 and Prince Rupert 0), 18% higher than the 4-week moving average and 8% higher than Week 05 last year.
- Thunder Bay unloads were 1,314 cars, 3% higher than the 4-week moving average and 51% higher than Week 05 last year.
- Year-to-date total western port unloads are 34% higher than the same period last year. The corresponding tonnage is 30% higher than the same period last year.
- The total average terminal out-of-car time (OCT) increased to 9.7% from 9.5% the previous week. The OCT for Week 05 was 12.7% at Vancouver and 0.0% at Thunder Bay. At the time of publishing, Prince Rupert had not yet reported Week 05 OCT.

#### 5. Shipments: (Page 5)

- Year-to-date Western Canadian shipments from port terminal elevators at Week 05 are 35% higher than the same period last year and 14% higher than the 3-year average.

#### 6. Vessels: (Page 5)

- Vancouver vessel lineup for Week 06 2023-24 decreased to 19 vessels (The current one-year average at Vancouver is 22 vessels). Of the 19, 6 were at berth, 5 were anchored at English Bay, 1 was anchored at Burrard Inlet, and 7 were anchored at Vancouver Island.
- Prince Rupert vessel lineup for Week 06 2023-24 increased to 1 vessel (The current one-year average at Prince Rupert is 3 vessels).
- Vessels cleared from Vancouver was 10, and from Prince Rupert was 0 in Week 06 2023-24.

# 1. Stocks in Store

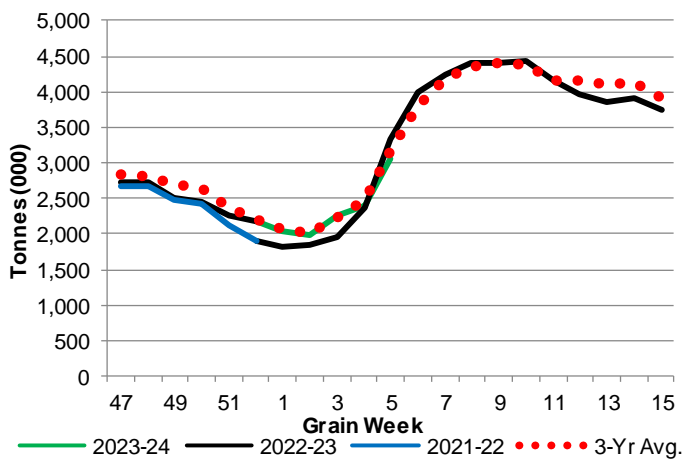
1-A1 Country Stocks ('000 tonnes) – Week 05

	MB	SK	AB	BC	Total
2023-24	676.4	1,546.5	823.0	21.8	3,067.7
2022-23	480.9	1,708.8	1,102.6	26.7	3,319.0
3-Yr Avg.	586.8	1,595.9	974.9	23.3	3,180.9
Var % - LY	41%	-9%	-25%	-18%	-8%
Var % 3-Yr Avg.	15%	-3%	-16%	-7%	-4%
Storage Capacity	1,680.8	4,217.4	2,507.8	41.2	8,447.2
Estimated Working Capacity	1,092.5	2,741.3	1,630.1	26.8	5,490.7
23-24 % of Wkg Cap	62%	56%	50%	81%	56%

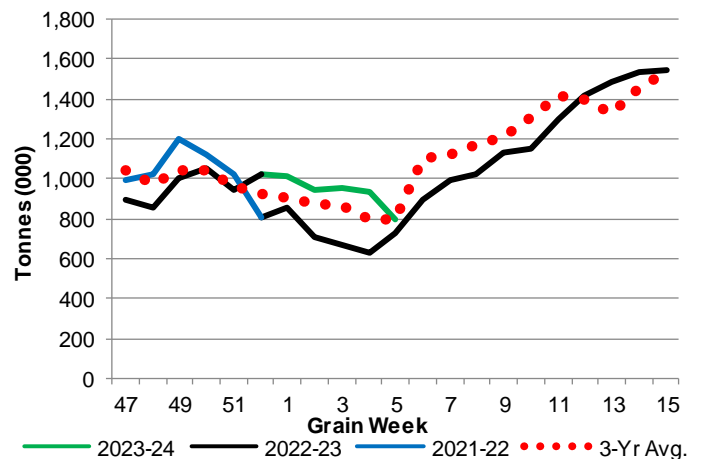
1-B1 Terminal Stocks ('000 tonnes) – Week 05

	VC	PR	West Coast	CH	TB	Total
2023-24	446.9	13.7	460.6	0.7	339.1	800.4
2022-23	523.6	14.7	538.3	0.7	183.5	722.5
3-Yr Avg.	499.7	16.4	516.1	0.5	282.8	799.4
Var % - LY	-15%	-7%	-14%	0%	85%	11%
Var % 3-Yr Avg.	-11%	-16%	-11%	40%	20%	0%
Storage Capacity	1,275.5	209.5	1,485.0	140.0	1,127.5	2,752.5
Estimated Working Capacity	892.9	146.7	1,039.6	98.0	789.2	1,926.8
23-24 % of Wkg Cap	50%	9%	44%	1%	43%	42%

1-A2 Weekly Country Stocks in Store



1-B2 Weekly Terminal Stocks in Store

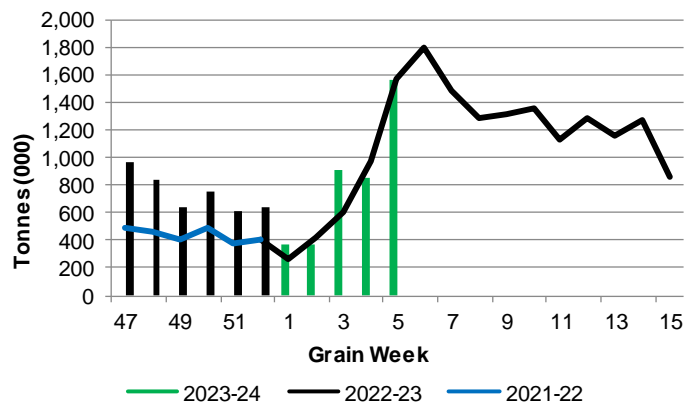


# 2. Country Deliveries

2-A Country Deliveries ('000 tonnes) – Week 05

	MB	SK	AB	BC	Total
2023-24	375.1	767.1	418.6	6.7	1,567.5
2022-23	232.9	771.7	549.3	14.5	1,568.4
4 Wk Avg	218.5	451.5	248.3	5.5	923.8
Var % to Last Year	61%	-1%	-24%	-54%	0%
Var % To 4 Wk Avg	72%	70%	69%	22%	70%

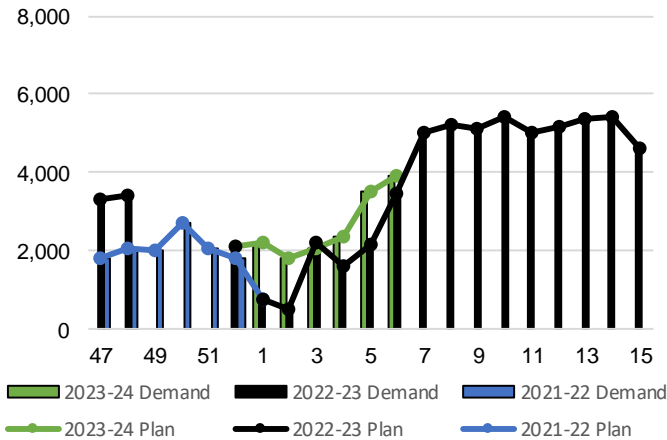
2-B 2023-24 Weekly Country Deliveries



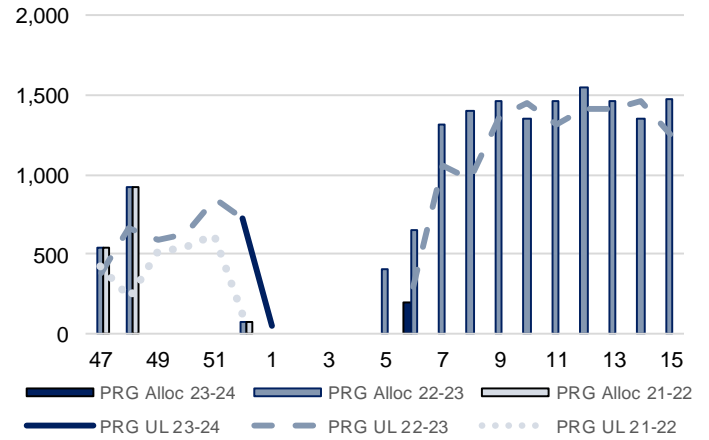
### 3. Railcar Supply

**Special Note to readers:** CPKC discontinued publishing weekly railcar spotting plans in Week 12 2014-15 (GCRS Service Report). CN continues to publish a weekly plan and the graphs below reflect CN's plan to Week 06 2023-24. Note that the orders accepted do not necessarily reflect shipper demand, but rather the railways' acceptance of shippers' car orders. When both railways provide the order fulfillment data requested with the expansion of the GMP mandate, which was announced on February 3, 2014, a complete set of metrics will be presented.

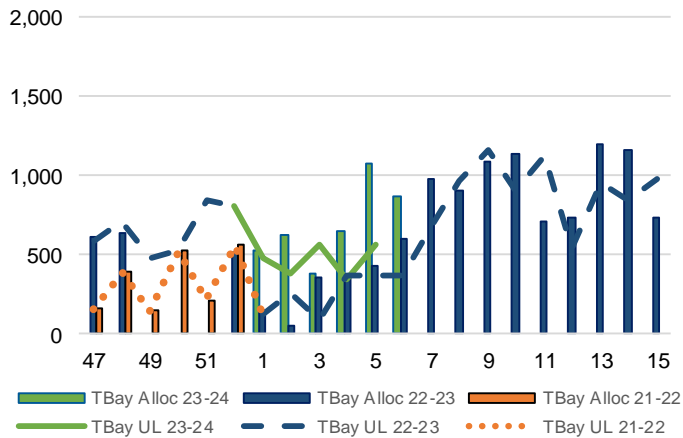
**3-A: Canadian National Planned Car Allocation vs. Demand (cars) To Week 06 2023-24**



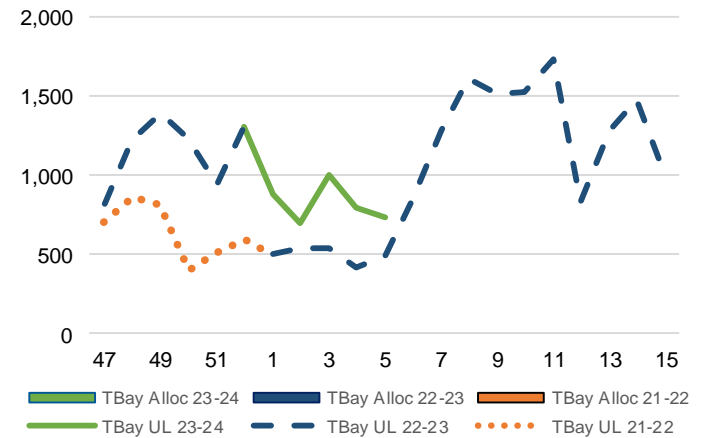
**3-B3: Canadian National Planned Car Allocation to Western Ports Vs. Corridor Unloads at Port (cars) – Prince Rupert**



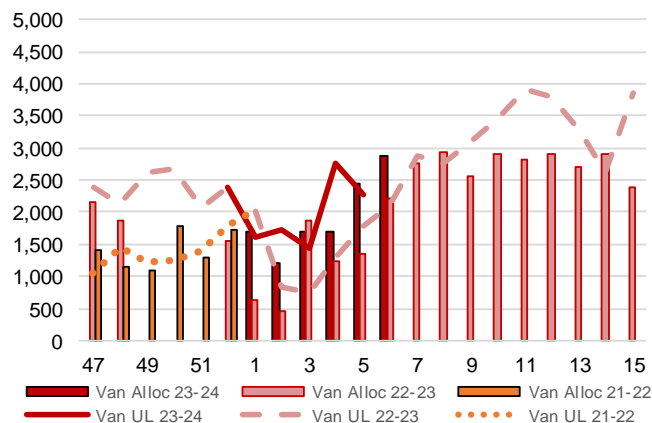
**3-B1: Canadian National Planned Car Allocation to Western Ports Vs. Corridor Unloads at Port (cars) – Thunder Bay**



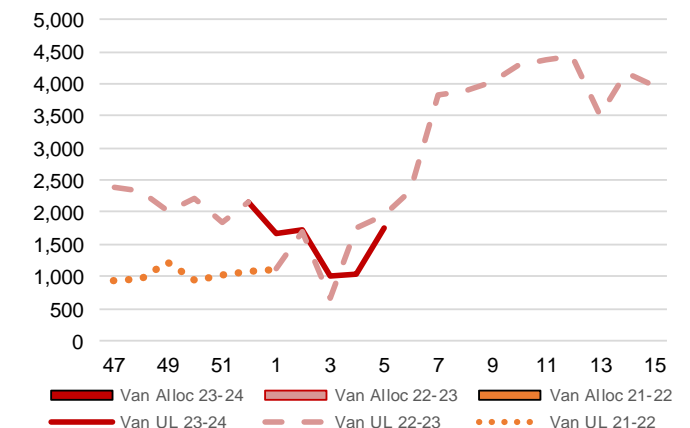
**3-C1: Canadian Pacific Kansas City Planned Car Allocation to Western Ports vs. Corridor Unloads at Port (cars) – Thunder Bay**



**3-B2: Canadian National Planned Car Allocation to Western Ports Vs. Corridor Unloads at Port (cars) – Vancouver**



**3-C2: Canadian Pacific Kansas City Planned Car Allocation to Western Ports vs. Corridor Unloads at Port (cars) – Vancouver**



## 4. Port Performance

### 4-A Weekly Unloads by Port (Cars) – This Year for Week 05, 4-Week Moving Average and Variances

	Vancouver	Prince Rupert	West Coast	Thunder Bay	Churchill	Total
2023-24	4,044	-	4,044	1,314	-	5,358
2022-23	3,738	-	3,738	873	-	4,611
4-Wk Avg.	3,433	-	3,433	1,277	-	4,710
Var % to Last Year	8%	n/a	8%	51%	n/a	16%
Var % to 4-Wk Avg.	18%	n/a	18%	3%	n/a	14%

### 4-B Terminal Unloads by Port – This Year-to-Date as at Week 05 and Variances

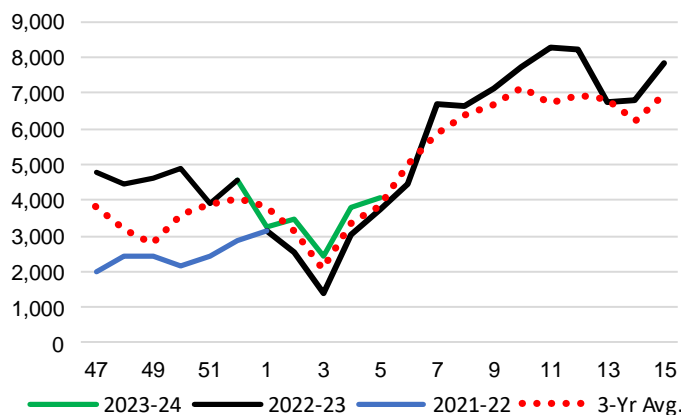
YTD Unloads (cars)	Vancouver	Prince Rupert	West Coast	Thunder Bay	Churchill	Total
2023-24	17,007	42	17,049	6,466	-	23,515
2022-23	13,866	-	13,866	3,726	-	17,592
3-Yr Avg	16,230	42	16,271	5,164	-	21,435
Var % to Last Year	23%	n/a	23%	74%	n/a	34%
Var % to 3-Yr Avg	5%	1%	5%	25%	n/a	10%

YTD Unloads ('000 tonnes)	Vancouver	Prince Rupert	West Coast	Thunder Bay	Churchill	Total
2023-24	1,617.9	3.9	1,621.8	624.2	-	2,246.0
2022-23	1,352.4	-	1,352.4	371.0	-	1,723.4
3-Yr Avg.	1,561.8	3.7	1,565.5	502.0	-	2,067.5
Var % to Last Year	20%	n/a	20%	68%	n/a	30%
Var % to 3-Yr Avg.	4%	4%	4%	24%	n/a	9%

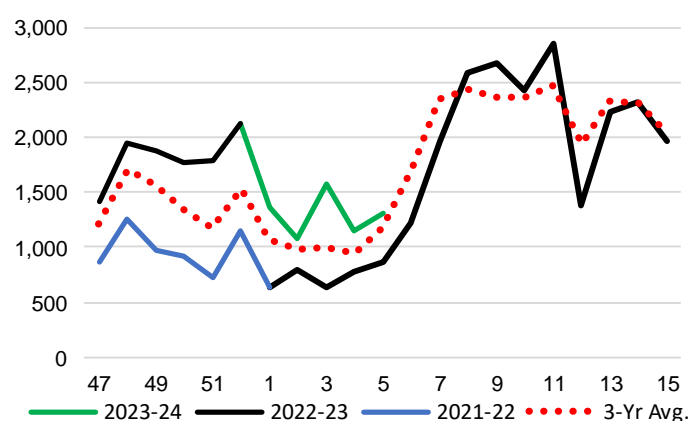
### 4-C Vancouver Unloads (cars)

(This Year vs. Last Year and the 3-Year Average)



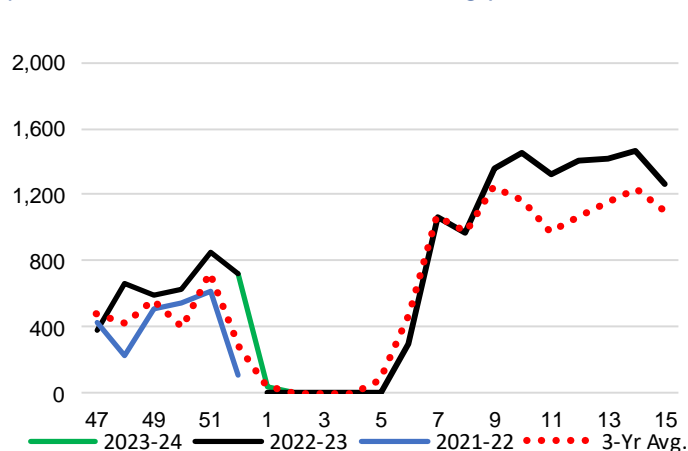
### 4-E Thunder Bay Unloads (cars)

(This Year vs. Last Year and the 3-Year Average)

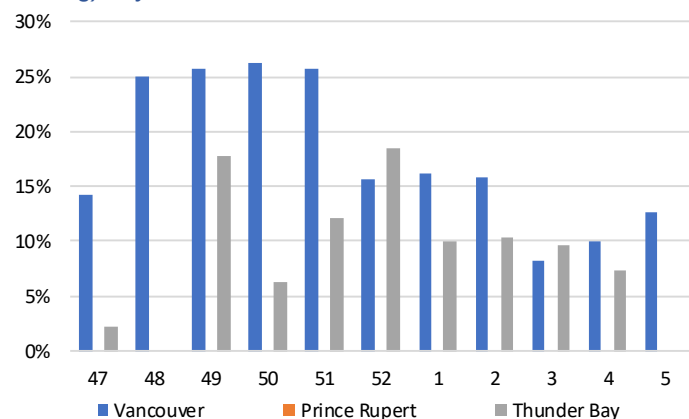


### 4-D Prince Rupert Unloads (cars)

(This Year vs. Last Year and the 3-Year Average)



### 4-F Weekly Out-of-Car Time (% of hours out-of-cars / total hours working) – by Port to Week 05



Out-of-car time is measured weekly and uses data from terminal elevators on the total number of hours the facilities are open & staffed (including overtime hours) and the corresponding number of hours that terminals have no railcars available to unload. The measure is expressed as a percentage (hours without cars to the total number of hours working).

**4-G Monthly Unloads (cars) – This year vs. Last Year and the 3-Year Average to Week 05 2023-24**

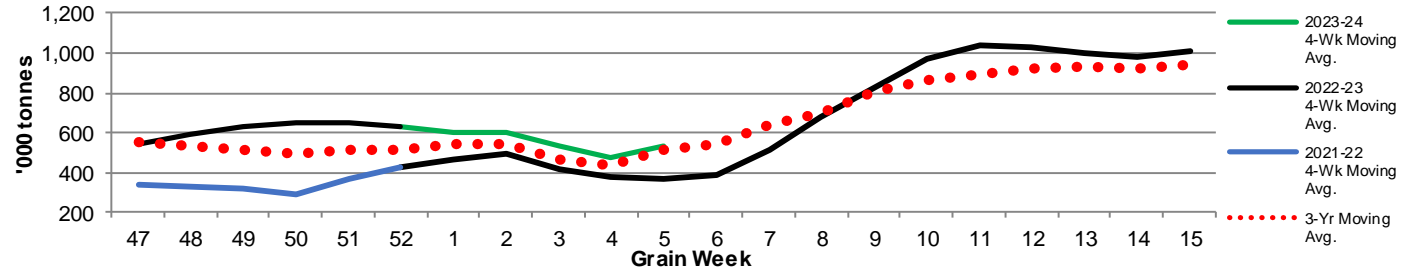
Months	Aug	Sep	Oct	Nov	Dec	Jan	Feb	Mar	Apr	May	Jun	Jul
Weeks	1-5	6-9	10-13	14-18	19-22	23-27	28-31	32-35	36-39	40-44	45-48	49-53
2023-24	23,515	-	-	-	-	-	-	-	-	-	-	-
2022-23	17,592	37,081	45,507	54,625	31,875	42,443	31,746	34,971	34,634	28,378	23,280	28,334
3-Yr Avg.	21,435	36,603	41,283	44,994	29,024	35,661	25,692	27,576	31,323	28,894	21,322	21,701
Var % to Last Year	34%											
Var % to 3-Yr Avg.	10%											

**5. Shipments**

**5-A Shipments from Port Terminals ('000 tonnes) – This Year-to-Date as at Week 05 and Variance to Last Year-to-Date**

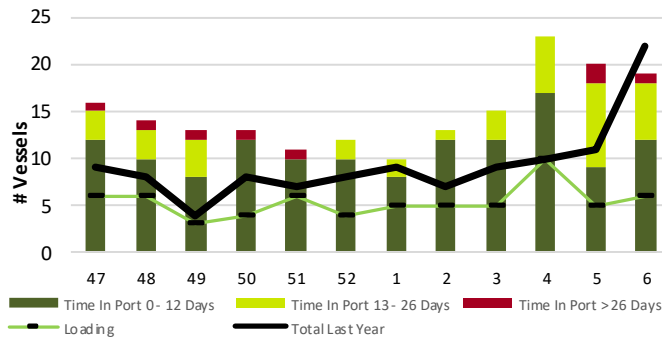
	Vancouver	Prince Rupert	West Coast	Thunder Bay	Churchill	Total
2023-24	1,773.7	77.0	1,850.7	688.6	-	2,539.3
2022-23	1,300.6	51.3	1,351.9	528.3	-	1,880.2
3-Yr Avg.	1,572.4	42.8	1,615.2	612.3	-	2,227.5
Var % to Last Year	36%	50%	37%	30%	n/a	35%
Var % to 3-Yr Avg.	13%	80%	15%	12%	n/a	14%

**5-B Weekly Shipments ('000 tonnes) from Port Terminals - This year 4-Week moving avg. vs. last year 4-Week moving avg. and the 3-Year moving avg.**

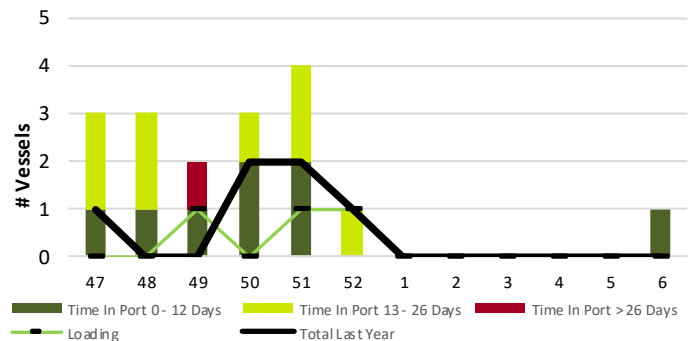


**6. Vessels**

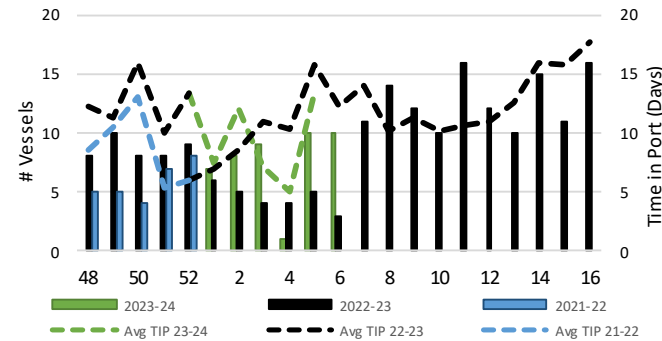
**6-A Vessel Lineup at Vancouver as of Week 06 2023-24**



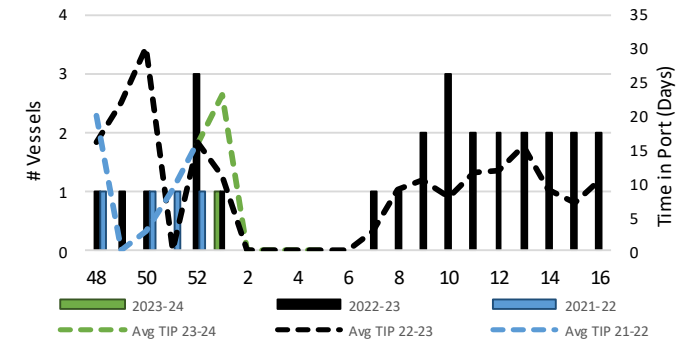
**6-C Vessel Lineup at Prince Rupert as of Week 06 2023-24**



**6-B Vessels Cleared at Vancouver up to Week 06 2023-24**



**6-D Vessels Cleared at Prince Rupert up to Week 06 2023-24**



Note: The 'Time in Port' measure for 6-A and 6-C is calculated as how long each vessel in the lineup has been in port as at Sunday 23:59 of that grain week. The 'Avg Time in Port (TIP)' measure for 6-B and 6-D is the average number of days that all vessels which cleared that week were in port. These measures use vessel data provided by the BC Chamber of Shipping and Pacific Pilotage Authority.