

Grain Monitoring Program

Weekly Performance Update

January 24, 2023

For Grain Week 24 (2022-23 CY)

Summary

	Week 24	Week 23	Var. from Last Year
--	---------	---------	---------------------

1. Stocks in Store ('000 tonnes)

Country Elevators	↑ 3,807.5	3,515.7	-2%
% of Working Capacity	69%	64%	
Terminal Elevators	↓ 1,210.0	1,295.4	42%
% of Working Capacity	63%	67%	

2. Country Deliveries ('000 tonnes)

Country Deliveries	↑ 1,326.3	1,111.6	49%
--------------------	-----------	---------	-----

3. Railcar Supply to Western Ports (Cars)

CN Allocation Plan	↑ 3,324	3,169	151%
CN Unloads	↓ 4,637	4,746	106%
CP Allocation Plan	n/a	n/a	n/a
CP Unloads	↓ 3,645	4,701	81%

4. Port Performance (Cars)

Total Weekly Unloads	↓ 8,282	9,447	94%
4-Week Rolling Average	↓ 7,291	7,645	n/a
Var. to 4-Week Rolling Average	↓ 14%	24%	n/a
YTD Unloads	↑ 204,385	196,103	42%
Weekly Out-of-Car Time	↑ 10.3%	7.2%	-66.2%

5. Terminal Shipments Year-to-Date ('000 tonnes)

Vancouver	↑ 13,966.7	13,145.6	57%
Prince Rupert	↑ 2,026.2	1,937.2	88%
Churchill	— 0.0	0.0	n/a
Thunder Bay	↑ 3,741.9	3,676.5	6%
Total Western Canada	19,734.8	18,759.3	46%

6. Vessels as at Jan 22, 2023

		Week 25	Week 24	Var. from Last Year
Vancouver	Vessel Lineup in port	↓ 34	35	127%
	Vessels Cleared	↑ 15	13	88%
	Vessels Arrived	↑ 14	13	367%
Pr. Rupert	Vessel Lineup in port	↓ 3	4	50%
	Vessels Cleared	↑ 3	1	50%
	Vessels Arrived	↓ 2	3	n/a

Vessels Inbound Jan 23, 2023 to Jan 29, 2023 (Week 26)

Vancouver	12
Prince Rupert	3

7. Weather

	Week 24 Actual	Week 25 Actual	Week 26 Forecast
Winnipeg Days < -25°C	0	0	2
Edmonton Days < -25°C	0	0	0
Vancouver Days Precip > 8mm	2	4	0

1. Stocks in Store: (Page 2)

- Country stocks increased to 3.81 MMT in Week 24 utilizing 69% of the system's working capacity. Space in primary elevators is good.
- Total western port terminal stocks decreased to 1.21 MMT in Week 24, utilizing 63% of the working capacity.

2. Country Deliveries: (Page 2)

- Deliveries to primary elevators were 1.33 MMT in Week 24.

3. Railcar Supply: (Page 3)

- Railcar allocation plans are supplied by CN to Week 26 2022-23 (see page 3 for details).

4. Port Performance: (Page 4)

- Total western port unloads were 14% higher than the 4-week moving average and 94% higher than Week 24 last year.
- West Coast unloads were 8,198 cars (Vancouver 7,120 and Prince Rupert 1,078), 25% higher than the 4-week moving average and 112% higher than Week 24 last year.
- Thunder Bay unloads were 84 cars, 89% lower than the 4-week moving average and 79% lower than Week 24 last year.
- Year-to-date total western port unloads are 42% higher than the same period last year. The corresponding tonnage is 46% higher than the same period last year.
- The total average terminal out-of-car time (OCT) increased to 10.3% from 7.2% the previous week. The OCT for Week 24 was 6.5% at Vancouver, 28.6% at Prince Rupert, and 16.0% at Thunder Bay.

5. Shipments: (Page 5)

- Year-to-date Western Canadian shipments from port terminal elevators at Week 24 are 46% higher than the same period last year and 7% higher than the 3-year average.
- The Great Lakes – St. Lawrence Seaway System is closed until spring 2023.

6. Vessels: (Page 5)

- Vancouver vessel lineup for Week 25 2022-23 decreased to 34 vessels (The current one-year average at Vancouver is 16 vessels). Of the 34, 11 were at berth, 10 were anchored at English Bay, 1 was anchored at Burrard Inlet, and 12 were anchored at Vancouver Island.
- Prince Rupert vessel lineup for Week 25 2022-23 decreased to 3 vessels (The current one-year average at Prince Rupert is 2 vessels).
- Vessels cleared from Vancouver was 15, and from Prince Rupert was 3 in Week 25 2022-23.

7. Weather: (Page 6)

- Temperatures across the prairies are forecasted to drop below -25°C regionally. Railways may invoke their winter operating plans where required.

1. Stocks in Store

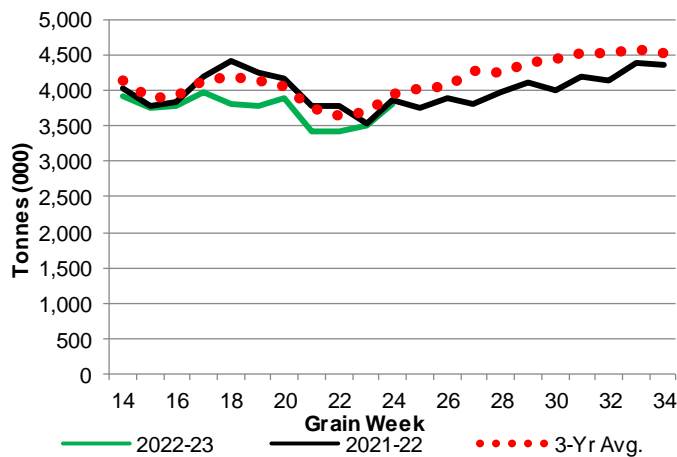
1-A1 Country Stocks ('000 tonnes) – Week 24

	MB	SK	AB	BC	Total
2022-23	707.9	1,848.4	1,228.1	23.1	3,807.5
2021-22	597.3	1,878.8	1,367.2	24.6	3,867.9
3-Yr Avg.	683.1	1,942.9	1,284.5	23.8	3,934.3
Var % - LY	19%	-2%	-10%	-6%	-2%
Var % 3-Yr Avg.	4%	-5%	-4%	-3%	-3%
Storage Capacity	1,682.0	4,229.3	2,513.6	41.2	8,466.1
Estimated Working Capacity	1,093.3	2,749.0	1,633.8	26.8	5,502.9
22-23 % of Wkg Cap	65%	67%	75%	86%	69%

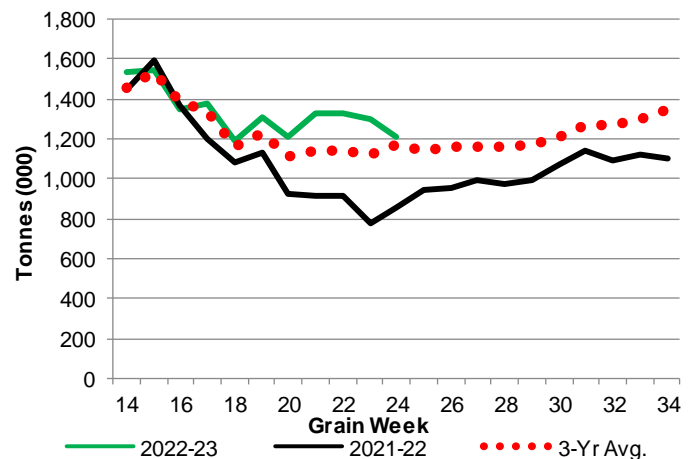
1-B1 Terminal Stocks ('000 tonnes) – Week 24

	VC	PR	West Coast	CH	TB	Total
2022-23	813.7	154.1	967.8	0.7	241.5	1,210.0
2021-22	467.5	78.7	546.2	0.7	307.1	854.0
3-Yr Avg.	693.9	115.2	809.2	0.7	355.8	1,165.6
Var % - LY	74%	96%	77%	0%	-21%	42%
Var % 3-Yr Avg.	17%	34%	20%	0%	-32%	4%
Storage Capacity	1,275.5	209.5	1,485.0	140.0	1,127.5	2,752.5
Estimated Working Capacity	892.9	146.7	1,039.6	98.0	789.2	1,926.8
22-23 % of Wkg Cap	91%	105%	93%	1%	31%	63%

1-A2 Weekly Country Stocks in Store



1-B2 Weekly Terminal Stocks in Store

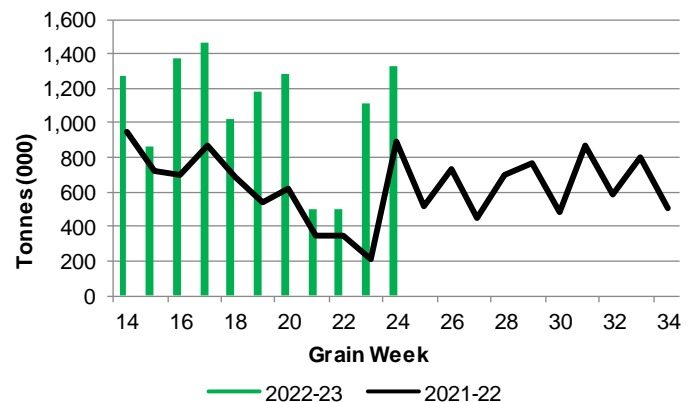


2. Country Deliveries

2-A Country Deliveries ('000 tonnes) – Week 24

	MB	SK	AB	BC	Total
2022-23	172.6	696.8	447.4	9.5	1,326.3
2021-22	134.9	382.8	364.2	8.3	890.2
4 Wk Avg	142.8	442.6	266.1	5.8	857.3
Var % to Last Year	28%	82%	23%	15%	49%
Var % To 4 Wk Avg	21%	57%	68%	64%	55%

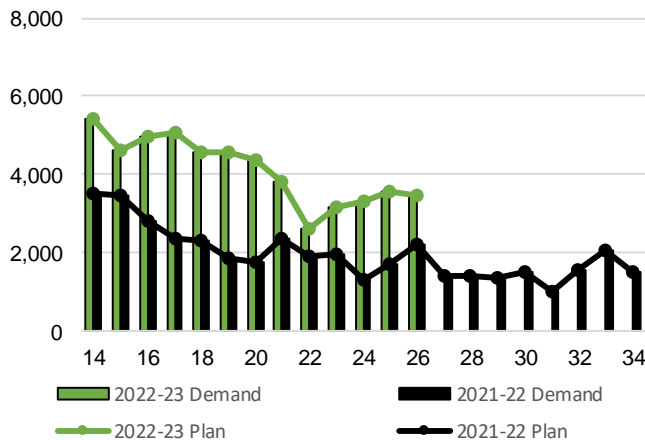
2-B 2022-23 Weekly Country Deliveries



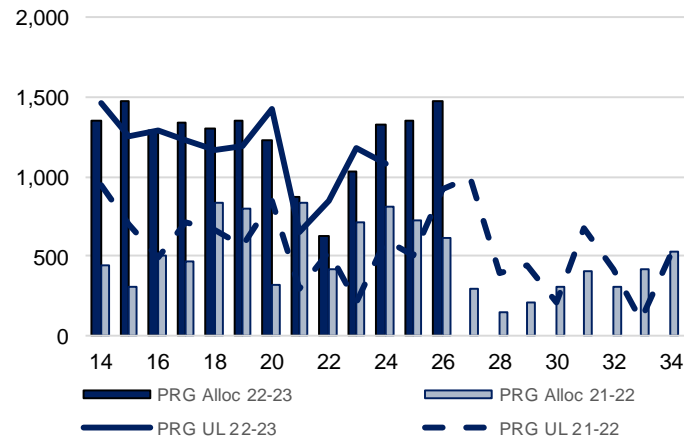
3. Railcar Supply

Special Note to readers: CP discontinued publishing weekly railcar spotting plans in Week 12 2014-15 (GCRS Service Report). CN continues to publish a weekly plan and the graphs below reflect CN's plan to Week 26 2022-23. Note that the orders accepted do not necessarily reflect shipper demand, but rather the railways' acceptance of shippers' car orders. When both railways provide the order fulfillment data requested with the expansion of the GMP mandate, which was announced on February 3, 2014, a complete set of metrics will be presented.

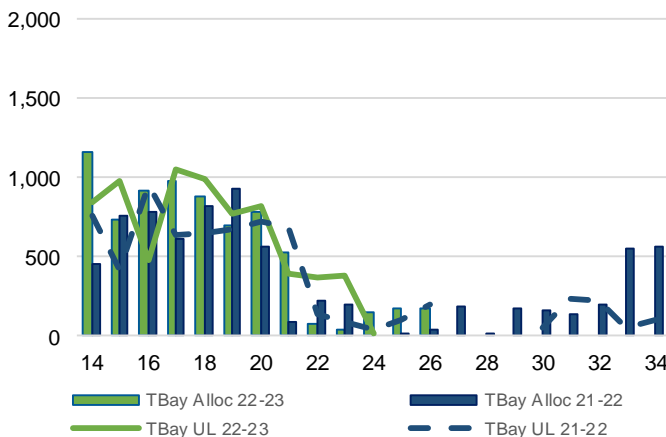
3-A: Canadian National Planned Car Allocation vs. Demand (cars) To Week 26 2022-23



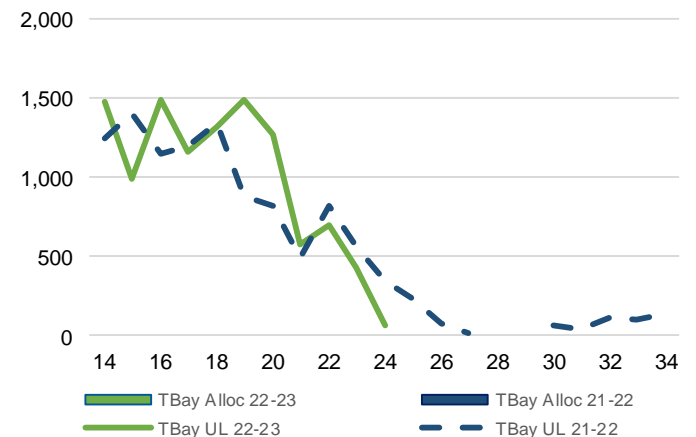
3-B3: Canadian National Planned Car Allocation to Western Ports Vs. Corridor Unloads at Port (cars) – Prince Rupert



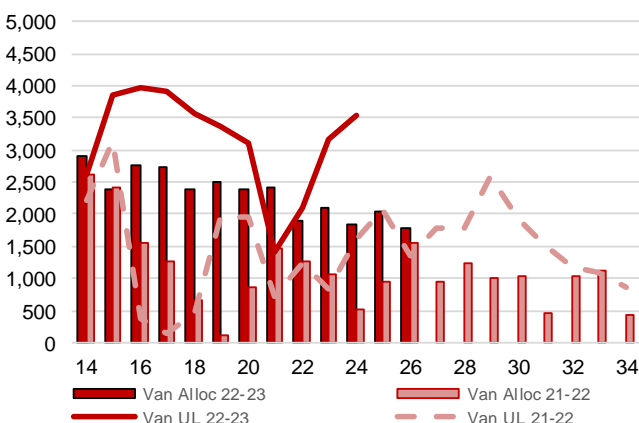
3-B1: Canadian National Planned Car Allocation to Western Ports Vs. Corridor Unloads at Port (cars) – Thunder Bay



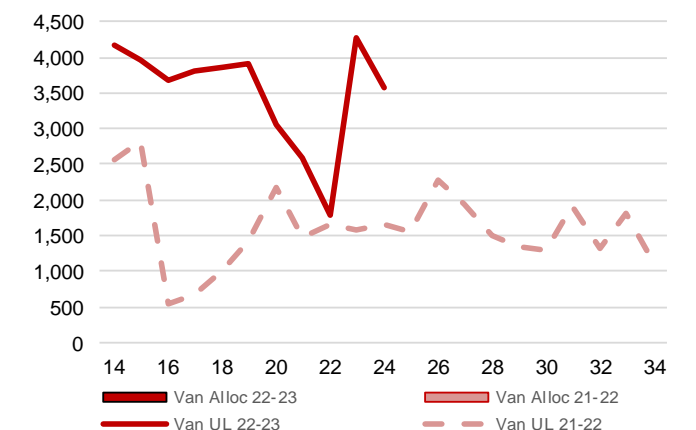
3-C1: Canadian Pacific Planned Car Allocation to Western Ports vs. Corridor Unloads at Port (cars) – Thunder Bay



3-B2: Canadian National Planned Car Allocation to Western Ports Vs. Corridor Unloads at Port (cars) – Vancouver



3-C2: Canadian Pacific Planned Car Allocation to Western Ports vs. Corridor Unloads at Port (cars) – Vancouver



4. Port Performance

4-A Weekly Unloads by Port (Cars) – This Year for Week 24, 4-Week Moving Average and Variances

	Vancouver	Prince Rupert	West Coast	Thunder Bay	Churchill	Total
2022-23	7,120	1,078	8,198	84	-	8,282
2021-22	3,264	606	3,870	395	-	4,265
4-Wk Avg.	5,616	940	6,555	736	-	7,291
Var % to Last Year	118%	78%	112%	-79%	n/a	94%
Var % to 4-Wk Avg.	27%	15%	25%	-89%	n/a	14%

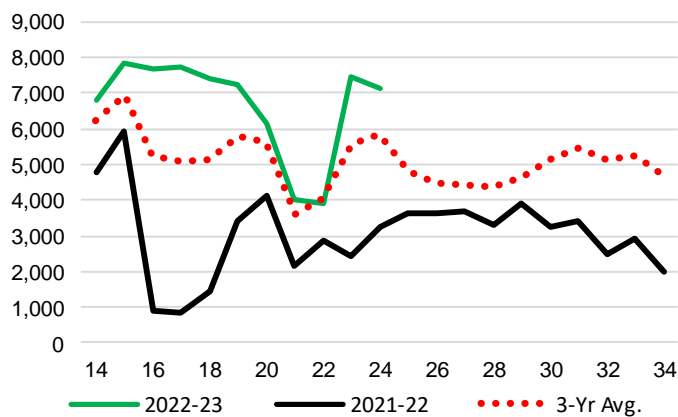
4-B Terminal Unloads by Port – This Year-to-Date as at Week 24 and Variances

YTD Unloads (cars)	Vancouver	Prince Rupert	West Coast	Thunder Bay	Churchill	Total
2022-23	143,127	22,086	165,213	39,172	-	204,385
2021-22	94,308	12,389	106,697	37,288	-	143,985
3-Yr Avg	131,139	20,979	152,118	42,952	354	195,424
Var % to Last Year	52%	78%	55%	5%	n/a	42%
Var % to 3-Yr Avg	9%	5%	9%	-9%	-100%	5%

YTD Unloads ('000 tonnes)	Vancouver	Prince Rupert	West Coast	Thunder Bay	Churchill	Total
2022-23	13,879.0	2,120.7	15,999.7	3,751.7	-	19,751.4
2021-22	8,850.3	1,143.8	9,994.1	3,531.2	-	13,525.3
3-Yr Avg.	12,405.1	1,972.3	14,377.4	4,056.8	31.8	18,466.0
Var % to Last Year	57%	85%	60%	6%	n/a	46%
Var % to 3-Yr Avg.	12%	8%	11%	-8%	-100%	7%

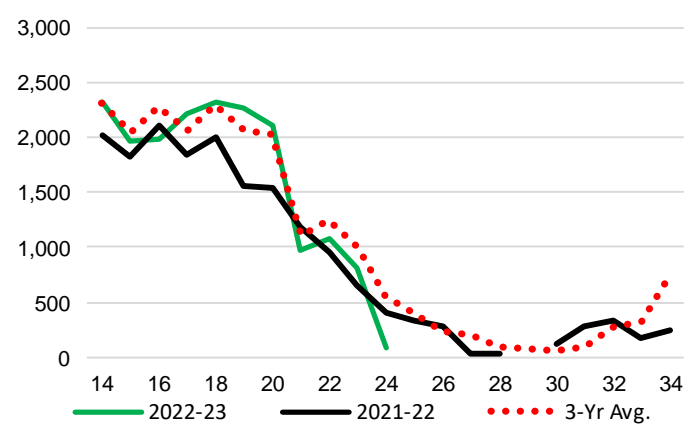
4-C Vancouver Unloads (cars)

(This Year vs. Last Year and the 3-Year Average)



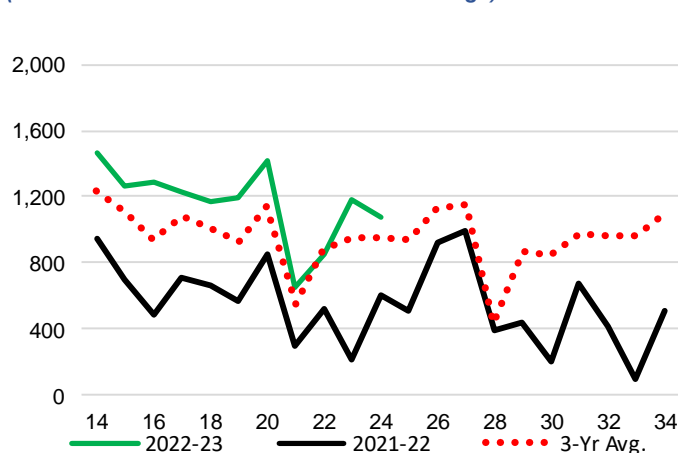
4-E Thunder Bay Unloads (cars)

(This Year vs. Last Year and the 3-Year Average)

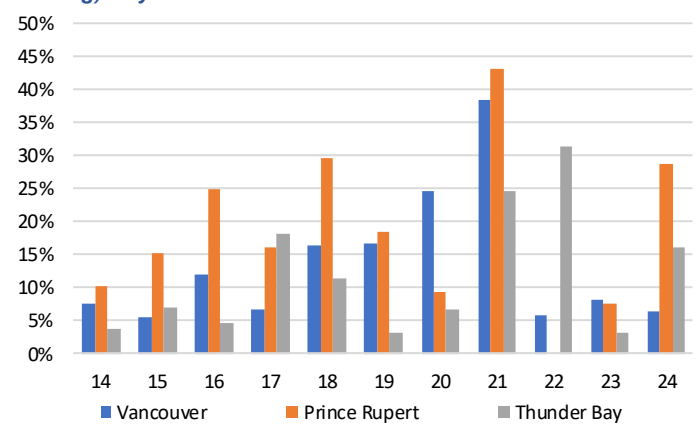


4-D Prince Rupert Unloads (cars)

(This Year vs. Last Year and the 3-Year Average)



4-F Weekly Out-of-Car Time (% of hours out-of-cars / total hours working) – by Port to Week 24



Out-of-car time is measured weekly and uses data from terminal elevators on the total number of hours the facilities are open & staffed (including overtime hours) and the corresponding number of hours that terminals have no railcars available to unload. The measure is expressed as a percentage (hours without cars to the total number of hours working).

4-G Monthly Unloads (cars) – This year vs. Last Year and the 3-Year Average to Week 22 2022-23

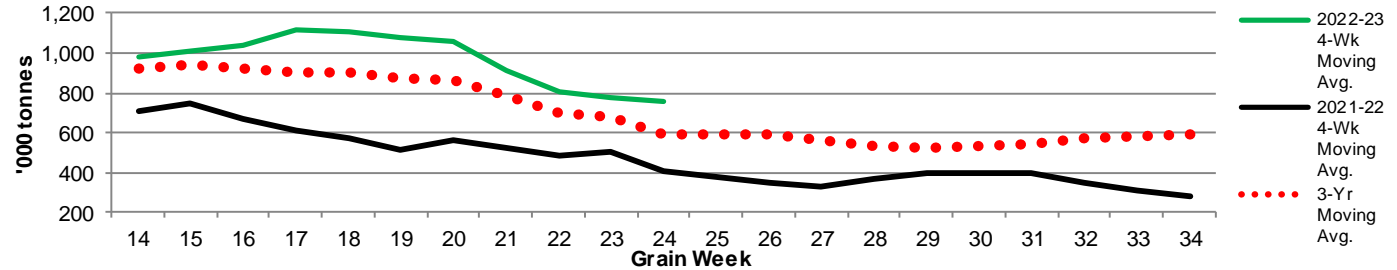
Months	Aug	Sep	Oct	Nov	Dec	Jan	Feb	Mar	Apr	May	Jun	Jul
Weeks	1-5	6-9	10-13	14-18	19-22	23-26	27-30	31-35	36-39	40-44	45-48	49-52
2022-23	17,592	37,081	45,507	54,624	31,852	-	-	-	-	-	-	-
2021-22	23,199	31,888	34,000	27,251	20,099	16,847	16,324	17,791	16,839	16,881	13,630	15,436
3-Yr Avg.	28,664	36,603	41,283	44,994	29,016	24,955	22,352	33,123	33,009	35,187	26,137	23,809
Var % to Last Year	-24%	16%	34%	100%	58%							
Var % to 3-Yr Avg.	-39%	1%	10%	21%	10%							

5. Shipments

5-A Shipments from Port Terminals ('000 tonnes) – This Year-to-Date as at Week 24 and Variance to Last Year-to-Date

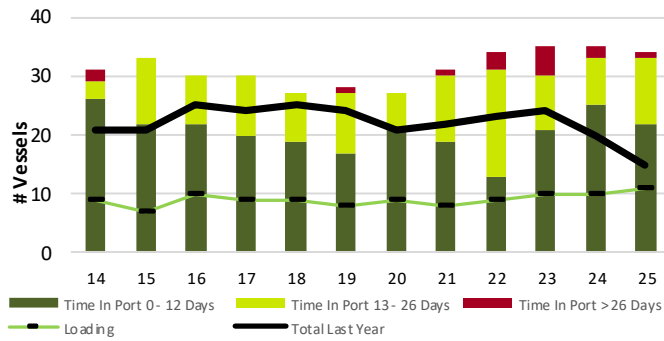
	Vancouver	Prince Rupert	West Coast	Thunder Bay	Churchill	Total
2022-23	13,966.7	2,026.2	15,992.9	3,741.9	-	19,734.8
2021-22	8,919.3	1,079.8	9,999.1	3,541.5	-	13,540.6
3-Yr Avg.	12,520.4	1,907.4	14,427.9	3,985.2	31.9	18,445.0
Var % to Last Year	57%	88%	60%	6%	n/a	46%
Var % to 3-Yr Avg.	12%	6%	11%	-6%	-100%	7%

5-B Weekly Shipments ('000 tonnes) from Port Terminals - This year 4-Week moving avg. vs. last year 4-Week moving avg. and the 3-Year moving avg.

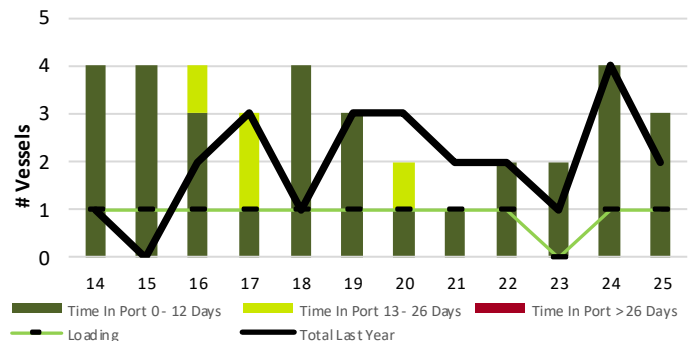


6. Vessels

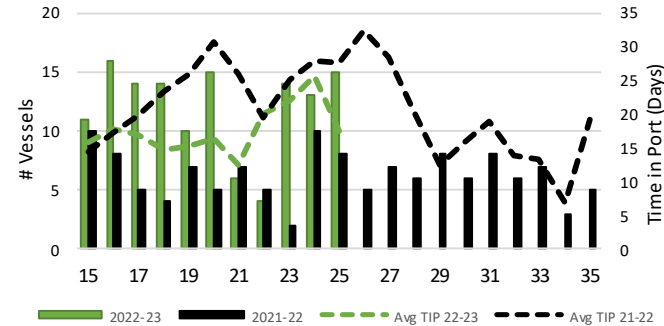
6-A Vessel Lineup at Vancouver as of Week 25 2022-23



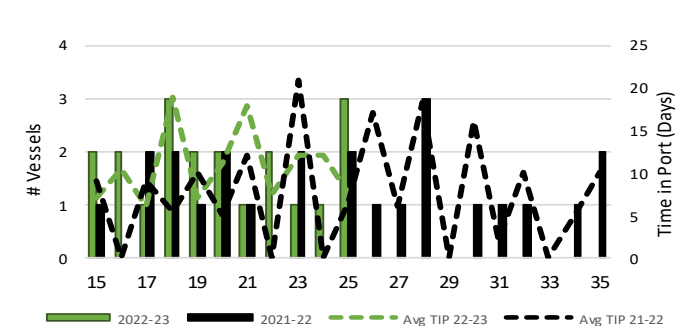
6-C Vessel Lineup at Prince Rupert as of Week 25 2022-23



6-B Vessels Cleared at Vancouver up to Week 25 2022-23



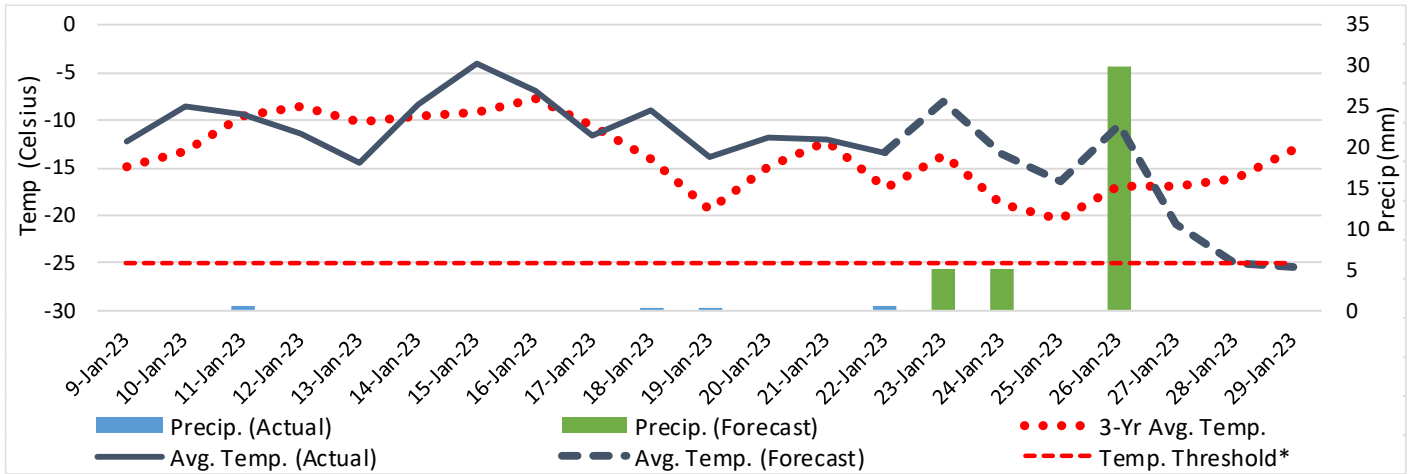
6-D Vessels Cleared at Prince Rupert up to Week 25 2022-23



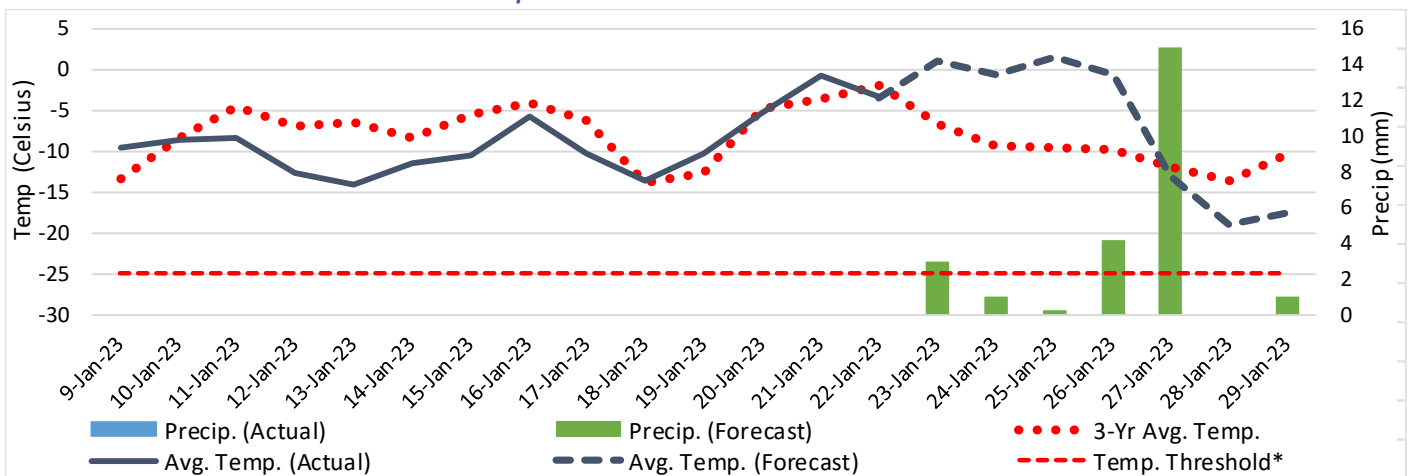
Note: The 'Time in Port' measure for 6-A and 6-C is calculated as how long each vessel in the lineup has been in port as at Sunday 23:59 of that grain week. The 'Avg Time in Port (TIP)' measure for 6-B and 6-D is the average number of days that all vessels which cleared that week were in port. These measures use vessel data provided by the BC Chamber of Shipping and Pacific Pilotage Authority.

7. Weather

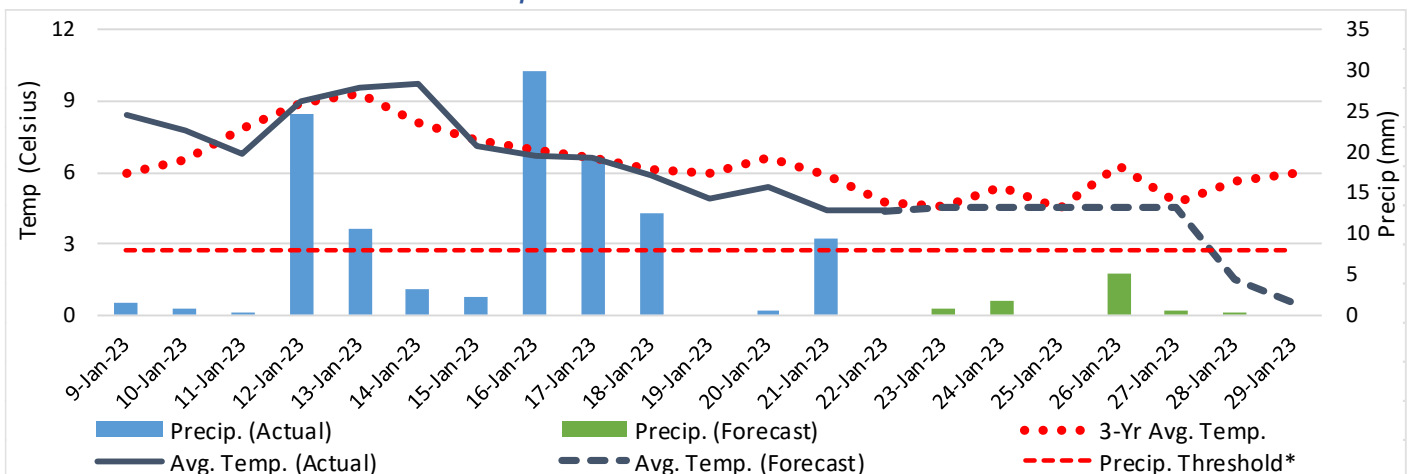
7-A Actual and Forecasted Weather at Winnipeg up to Week 26 2022-23



7-B Actual and Forecasted Weather at Edmonton up to Week 26 2022-23



7-C Actual and Forecasted Weather at Vancouver up to Week 26 2022-23



*Note: Precip Threshold refers to 8mm of rain. At this level of precipitation, vessel loading may be delayed. The duration of the delay will be dependent on the ship, the duration of rainfall, and the amount of precipitation. 8mm is a general guideline and is not meant to be a definitive limit.

Source: Environment Canada, The Weather Network (Forecast)