

# Grain Monitoring Program

## Weekly Performance Update

May 15, 2018

For Grain Week 40 (2017-18 CY)

### Summary

	This Week	Last Week	Var. from Last Year	
<b>1. Stocks in Store (Tonnes 000)</b>				
Country Elevators	↓ 3,418.2	3,647.7	16%	
% of Working Capacity	71%	76%		
Terminal Elevators	↓ 1,174.9	1,197.7	-12%	
% of Working Capacity	68%	69%		
<b>2. Country Deliveries (Tonnes 000)</b>				
Country Deliveries	↓ 841.3	875.3	10%	
<b>3. Railway Car Supply to Western Ports (Cars)</b>				
CN Allocation Plan	↓ 4,793	5,450	0%	
CN Unloads	↓ 4,361	5,141	-4%	
CP Allocation Plan	n/a	n/a	n/a	
CP Unloads	↑ 4,165	3,633	-18%	
<b>4. Port Performance</b>				
Total Weekly Unloads	↓ 8,526	8,774	-12%	
4 Week Rolling Average	↑ 8,265	8,126	n/a	
Var. to 4 Week RA	↓ 3%	8%	n/a	
YTD Unloads	↑ 287,847	279,321	-8%	
Weekly Out of Car Time	↑ 7.9%	2.8%	57%	
<b>5. Shipments (YTD Tonnes 000)</b>				
Vancouver	↑ 17,046	16,497	-2%	
Prince Rupert	↑ 4,125	4,006	-8%	
Thunder Bay	↑ 4,967	4,782	-15%	
<b>Total Western Canada</b>	<b>↑ 26,138</b>	<b>25,285</b>	<b>-6%</b>	
<b>6. Vessels as of 5/13/2018</b>				
Vancouver	Vessel Line Up	↑ 19	18	27%
	Vessels Cleared	↓ 9	13	-31%
	Vessels Incoming	↓ 7	10	n/a
Pr. Rupert	Vessel Line Up	↓ 3	5	-50%
	Vessels Cleared	↑ 4	3	33%
	Vessels Incoming	↓ 0	2	n/a

**Note:** Vessels incoming for the current week represents vessels forecasted to arrive in next grain week. Vessels incoming for the previous week represents the number of vessels that arrived in the current reporting week.

#### 1. Stocks in Store: (Page 2)

- Country stocks decreased to 3.4 MMT in Week 40 utilizing 71% of the system's working capacity. Space in primary elevators is fair.
- Total western port terminal stocks remained at 1.2 MMT in Week 40, utilizing 68% of the working capacity.

#### 2. Country Deliveries: (Page 2)

- Producer deliveries were 841,300 tonnes in Week 40.

#### 3. Railway Car Supply: (Page 3)

- Railcar allocation plans are supplied by CN to Week 42 of the 2017-18 grain year (see page 3 for details).

#### 4. Port Performance: (Page 4)

- Total western port unloads were 3% higher than the 4-week rolling average and 12% lower than Week 40 last year.
- West Coast unloads were 6,884 cars (Vancouver 5,417 and Prince Rupert 1,467), 3% higher than the 4-week rolling average and 7% lower than Week 40 last year.
- Thunder Bay unloads were 1,642 cars, 5% higher than the 4 week-rolling average and 27% lower than Week 40 last year.
- Year to date total western port unloads are 8% lower than same period last year. The corresponding tonnage is 7% lower.
- The total average terminal out of car time (OCT) increased to 7.9% from 2.8% in the previous week. The OCT time for Week 40 was 10% in Vancouver, and 1% in Thunder Bay. Note that at the time of publishing Prince Rupert has not reported its Week 40 OCT.

#### 5. Shipments: (Page 5)

- Year to date Western Canadian shipments from port terminal elevators at Week 40 are 6% lower than the same period last year and 1% lower than the 5-year average.

#### 6. Vessels: (Page 5)

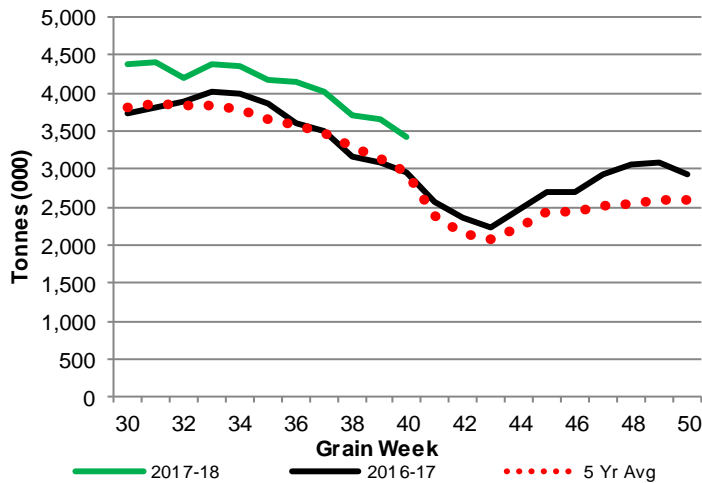
- Week 41 lineup at Vancouver increased to a total of 19 vessels (The current one-year average at Vancouver is 22 vessels). Of the 19, 7 were at berth, 11 were anchored at English Bay, and 1 was anchored along the southern shore of Vancouver Island.
- Prince Rupert vessel count decreased to 3 vessels (The current one-year average at Prince Rupert is 4 vessels).
- Vessels cleared from Vancouver were 9, and from Prince Rupert were 4 in Week 41 of the 2017-18 crop year.

# 1. Stocks in Store

1-A1 Country Stocks ('000 tonnes) – Week 40

	MB	SK	AB	BC	Total
2017-18	768.1	1,692.7	928.8	28.6	3,418.2
2016-17	691.5	1,463.5	773.6	18.1	2,946.7
5 Yr Avg	628.0	1,483.7	815.6	22.3	2,949.6
Var % - LY	11%	16%	20%	58%	16%
Var % - 5 Yr Avg	22%	14%	14%	28%	16%
Storage Capacity	1,577.1	3,878.3	1,913.7	41.1	7,410.2
Estimated Working Capacity	1,025.1	2,520.9	1,243.9	26.7	4,816.6
17-18 % of Wkg Cap	75%	67%	75%	107%	71%

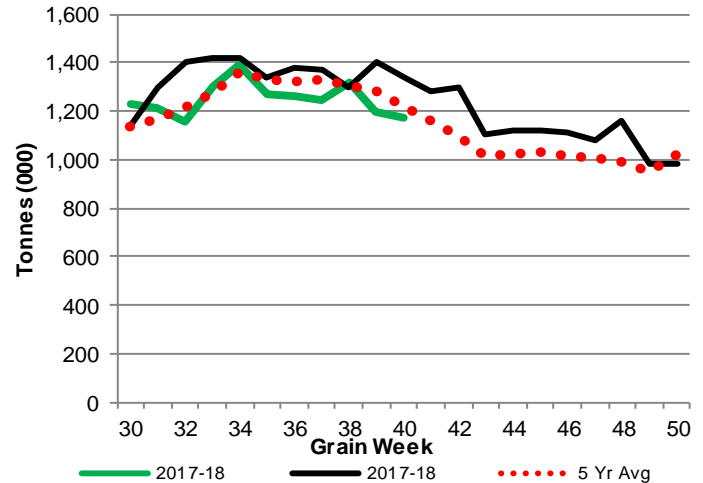
1-A2 Weekly Country Stocks in Store



1-B1 Terminal Stocks ('000 tonnes) – Week 40

	West Coast	Churchill	Thunder Bay	Total
2017-18	641.6	29.5	503.8	1,174.9
2016-17	730.2	29.5	578.0	1,337.7
5 Yr Avg	646.2	26.3	542.2	1,214.7
Var % - LY	-12%	0%	-13%	-12%
Var % - 5 Yr Avg	-1%	12%	-7%	-3%
Storage Capacity	1,187.5	140.0	1,157.5	2,485.0
Estimated Working Capacity	831.2	98.0	810.3	1,739.5
17-18 % of Wkg Cap	77%	30%	62%	68%

1-B2 Weekly Terminal Stocks in Store

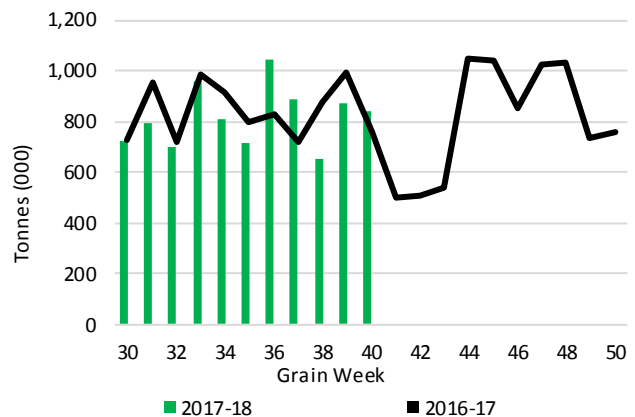


# 2. Country Deliveries

2-A Weekly Country Deliveries ('000 tonnes) - Week 40

	MB	SK	AB	BC	Total
2017-18	125.3	391.6	318.0	6.4	841.3
2016-17	89.3	324.0	342.2	7.0	762.4
4 Wk Avg	145.8	373.3	289.3	6.6	814.9
Var % to Last Year	40%	21%	-7%	-9%	10%
Var % To 4 Wk Avg	-14%	5%	10%	-3%	3%

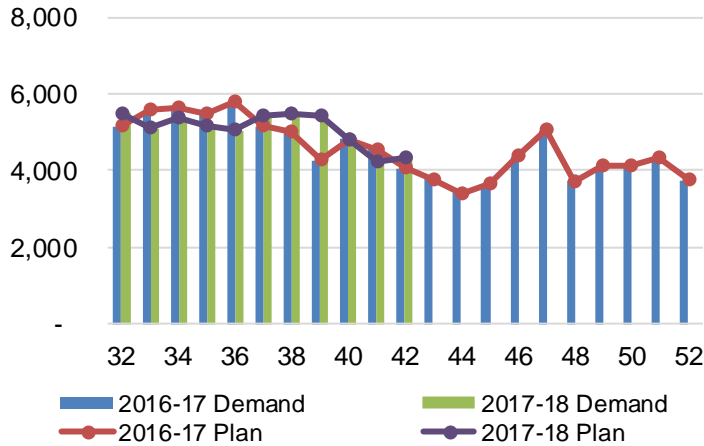
2-B 2017-18 Weekly Country Deliveries vs 2016-17



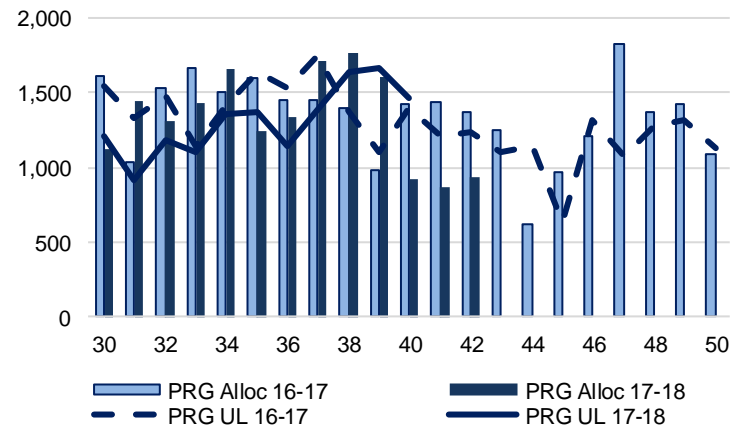
### 3. Railway Car Supply

**Special Note to readers:** CP discontinued publishing weekly railcar spotting plans in Week 12 of the 2014-15 crop year (GCRS Service Report). CN continues to publish a weekly plan and the graphs below reflect CN's plan to Week 42 of 2017-18. Note that the orders accepted do not necessarily reflect shipper demand, but rather the railways' acceptance of shippers' car orders. When both railways provide the order fulfillment data requested with the expansion of the GMP mandate, which was announced on February 3, 2014, a complete set of metrics will be presented.

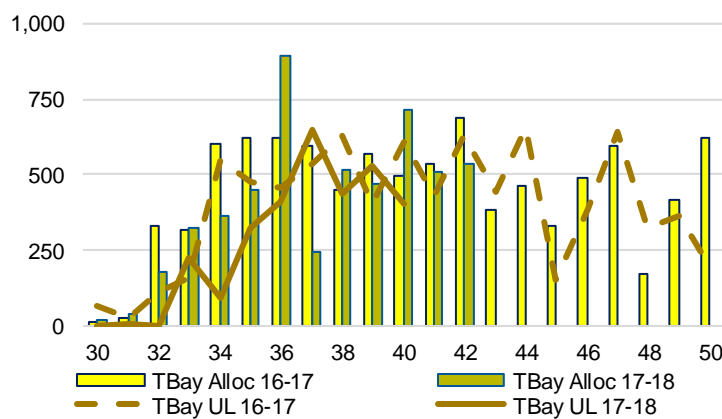
**3-A: Canadian National Planned Car Allocation vs. Demand (# of Cars) To Week 42 2017-18 Crop Year**



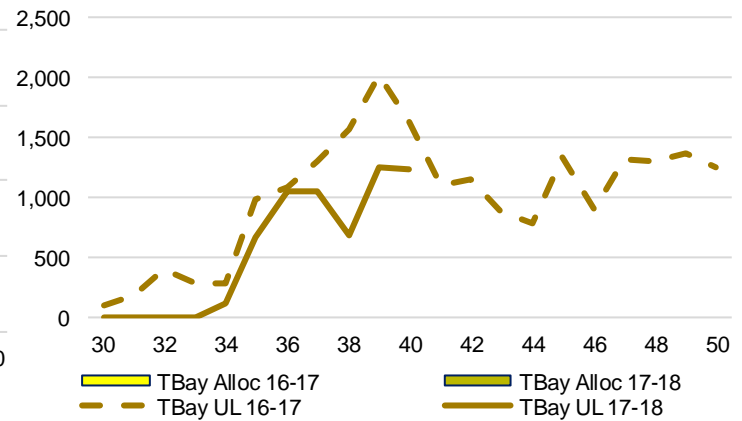
**3-B3: Canadian National Planned Car Allocation to Western Ports Vs. Corridor Unloads at Port (# of Cars) – Prince Rupert**



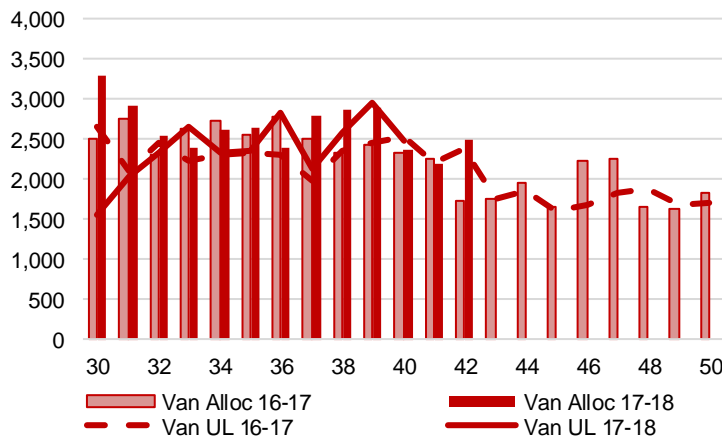
**3-B1: Canadian National Planned Car Allocation to Western Ports Vs. Corridor Unloads at Port (# of Cars) – Thunder Bay**



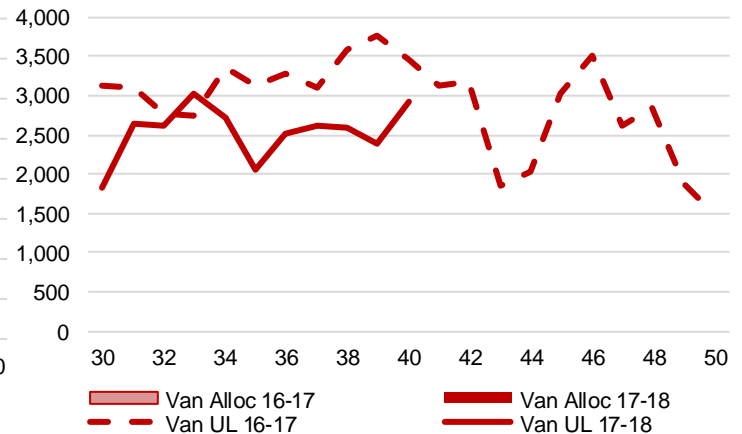
**3-C1: Canadian Pacific Planned Car Allocation to Western Ports vs. Corridor Unloads at Port (# of Cars) – Thunder Bay**



**3-B2: Canadian National Planned Car Allocation to Western Ports Vs. Corridor Unloads at Port (# of Cars) – Vancouver**



**3-C2: Canadian Pacific Planned Car Allocation to Western Ports vs. Corridor Unloads at Port (# of Cars) – Vancouver**



## 4. Port Performance

### 4-A Weekly Unloads by Port (Cars) – This Year for Week 40, 4-Week Rolling Average and Variances

	Vancouver	Prince Rupert	West Coast	Thunder Bay	Churchill	Total
2017-18	5,417	1,467	6,884	1,642	-	8,526
2016-17	6,011	1,403	7,414	2,237	-	9,651
4 Wk Avg	5,167	1,539	6,705	1,560	-	8,265
Var % to Last Year	-10%	5%	-7%	-27%	n/a	-12%
Var % to 4 Wk Avg	5%	-5%	3%	5%	n/a	3%

### 4-B Railcar Unloads and Tonnes – This Year to Date as of Week 40 and Variances

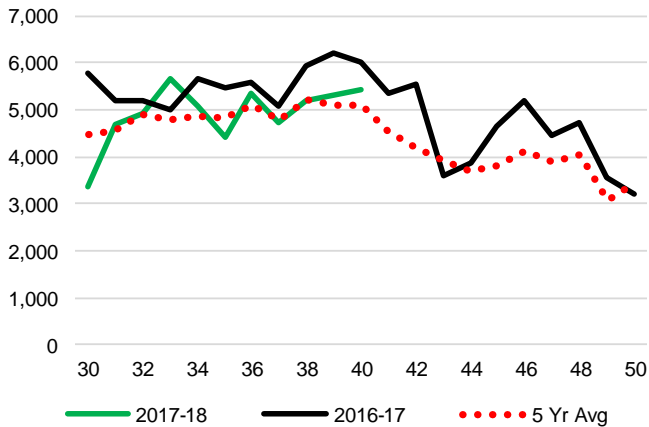
Total Cars	Vancouver	Prince Rupert	West Coast	Thunder Bay	Churchill	Total
2017-18	188,928	45,511	234,439	53,408	-	287,847
2016-17	195,667	52,534	248,201	64,810	-	313,011
5 Yr Avg	178,656	51,476	230,132	58,208	2,686	291,026
Var % to Last Year	-3%	-13%	-6%	-18%	n/a	-8%
Var % to 5 Yr Avg	6%	-12%	2%	-8%	-100%	-1%

Total Tonnes	Vancouver	Prince Rupert	West Coast	Thunder Bay	Churchill	Total
2017-18	17,028,094	4,115,415	21,143,509	4,909,159	-	26,052,668
2016-17	17,513,386	4,675,512	22,188,898	5,937,117	-	28,126,015
5 Yr Avg	15,935,840	4,592,592	20,528,432	5,326,519	294,229	26,149,179
Var % to Last Year	-3%	-12%	-5%	-17%	n/a	-7%
Var % to 5 Yr Avg	7%	-10%	3%	-8%	-100%	0%

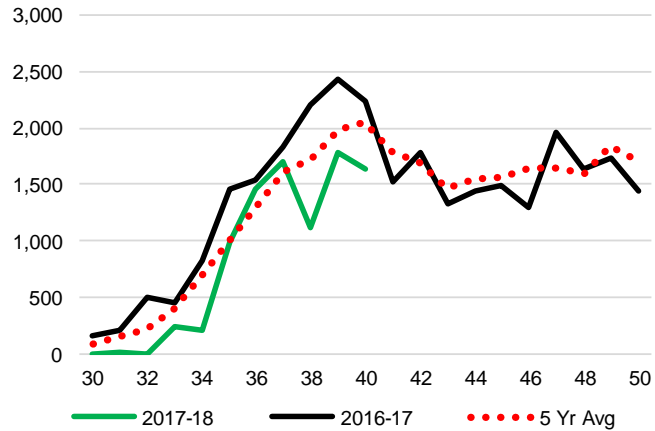
### 4-C Vancouver Unloads (# of Cars)

(This Year vs. Last Year and the 5-Year Average)



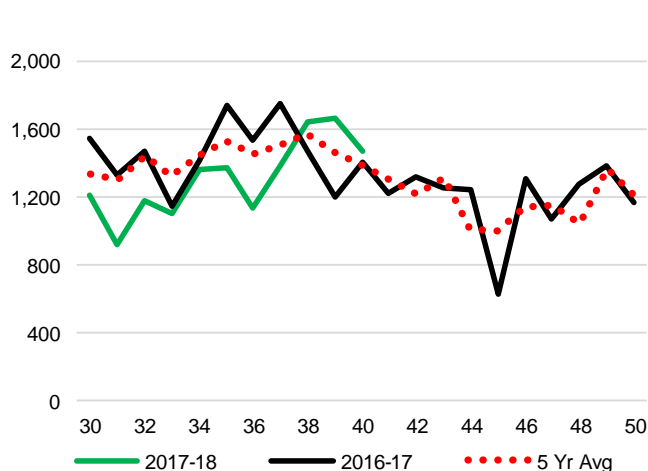
### 4-E Thunder Bay Unloads (# of Cars)

(This Year vs. Last Year and the 5-Year Average)

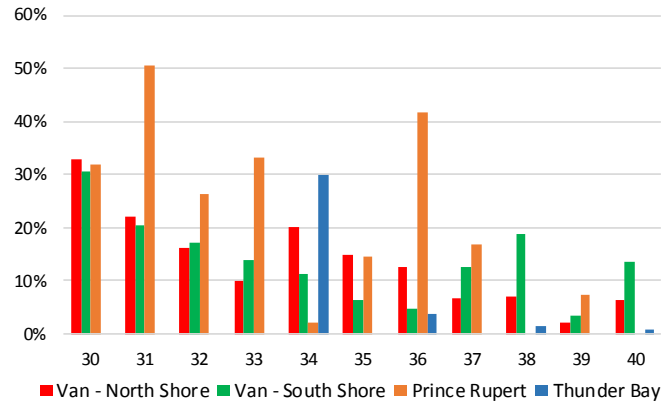


### 4-D Prince Rupert Unloads (# of Cars)

(This Year vs. Last Year and the 5-Year Average)



### 4-F Weekly Out of Car Time (% of hours out of cars / total hours working) – by Port to Week 40



Out of car time is measured weekly and uses data from terminal elevators on the total number of hours the facilities are open & staffed (including overtime hours) and the corresponding number of hours that terminals have no rail cars available to unload. The measure is expressed as a percentage (hours without cars to the total number of hours working). Note that at the time of publishing Prince Rupert has not reported its week 40 OCT.

4-G Monthly Unloads (Cars) – This year vs. Last Year and the 5-Year Average to Week 39

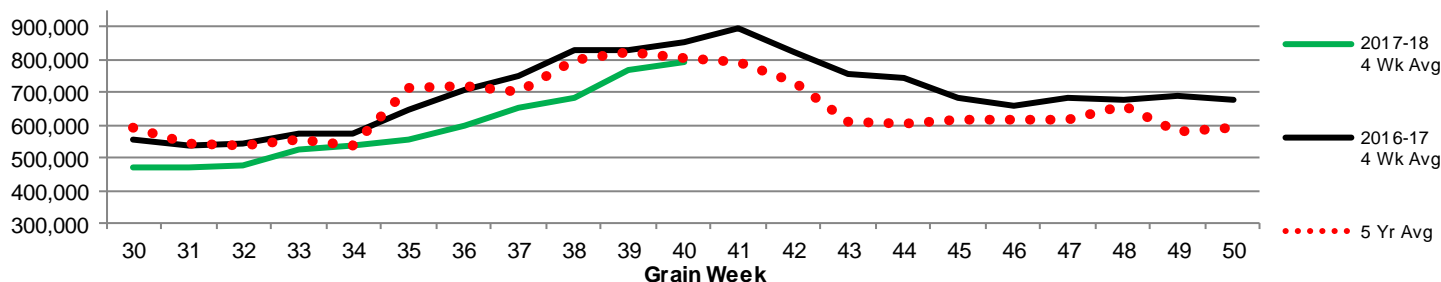
Months	Aug	Sep	Oct	Nov	Dec	Jan	Feb	Mar	Apr	May	Jun	Jul
Weeks	1-5	6-9	10-13	14-18	19-22	23-27	28-31	32-35	36-39	40-44	45-48	49-52
2017-18	30,257	34,787	35,650	40,849	29,069	30,458	19,212	26,536	31,760	-	-	-
2016-17	31,197	33,447	36,002	44,476	28,797	28,771	26,824	37,057	36,789	39,112	29,666	27,065
5 Yr Avg	33,626	33,193	34,523	41,645	26,367	30,021	22,872	27,427	32,666	36,037	26,863	25,033
Var % to Last Year	-3%	4%	-1%	-8%	1%	6%	-28%	-28%	-14%			
Var % to 5 Yr Avg	-10%	5%	3%	-2%	10%	1%	-16%	-3%	-3%			

## 5. Shipments

5-A Shipments from Port Terminals (Tonnes) – This Year as of Week 40 and Variance to Last Year

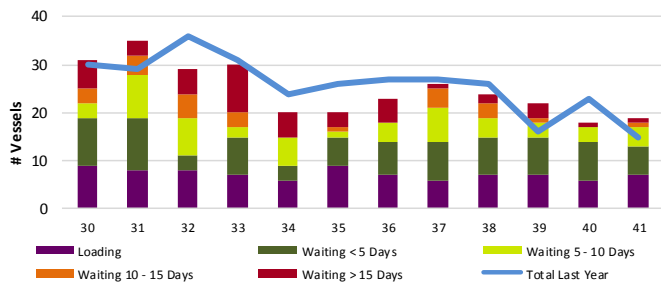
	Vancouver	Prince Rupert	West Coast	Thunder Bay	Churchill	Total
2017-18	17,046,418	4,125,134	21,171,552	4,966,527	-	26,138,079
2016-17	17,396,123	4,468,888	21,865,011	5,822,194	-	27,687,205
5 Year Avg	16,270,298	4,509,304	20,779,602	5,323,109	270,243	26,372,954
Var % to Last Year	-2%	-8%	-3%	-15%	n/a	-6%
Var % to 5 Year Avg	5%	-9%	2%	-7%	-100%	-1%

5-B Weekly Shipments (Tonnes) from Port Terminals - This year 4-Wk moving avg vs. last year 4-Wk moving avg and the 5-year avg

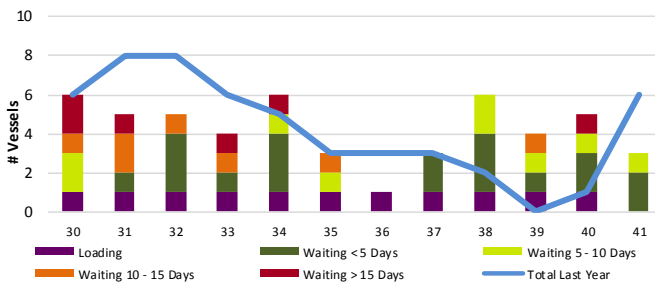


## 6. Vessels

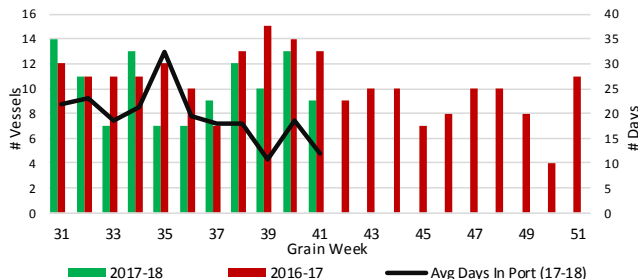
6-A Vessel lineup at Vancouver as of Week 41 2017-18



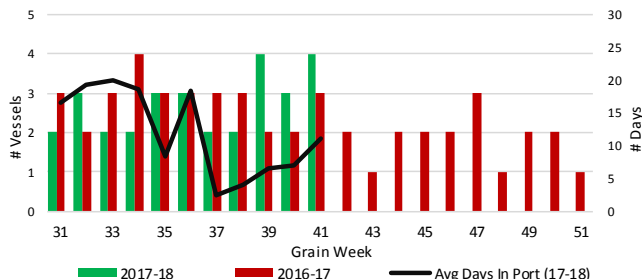
6-C Vessel lineup at Prince Rupert as of Week 41 2017-18



6-B Vessels Cleared at Vancouver up to Week 41 2017-18



6-D Vessels Cleared at Prince Rupert up to Week 41 2017-18



Note: To determine Avg Days in Port, Quorum first establishes which vessels cleared port in each specific grain week. Then, the number of days each cleared vessel spent in port is calculated by subtracting the date of arrival from the date of departure. Lastly, an average of these days is produced for the week, which yields Avg Days in Port. The measure uses vessel data provided by the BC Chamber of Shipping.