

Grain Monitoring Program

Weekly Performance Update

November 7, 2017

For Grain Week 13 (2017-18 CY)

Summary

	This Week	Last Week	Var. from Last Year	
1. Stocks in Store (Tonnes 000)				
Country Elevators	↓ 3,820.5	3,863.2	13%	
% of Working Capacity	81%	82%		
Terminal Elevators	↑ 1,502.2	1,464.7	26%	
% of Working Capacity	86%	84%		
2. Country Deliveries (Tonnes 000)				
Country Deliveries	↓ 941.3	991.7	-1%	
3. Railway Car Supply to Western Ports (Cars)				
CN Allocation Plan	↓ 5,021	5,355	-16%	
CN Unloads	↓ 3,975	4,645	-24%	
CP Allocation Plan	n/a	n/a	n/a	
CP Unloads	↑ 4,612	4,357	16%	
4. Port Performance				
Total Weekly Unloads	↓ 8,587	9,002	-7%	
4 Week Rolling Average	↓ 8,912	9,012	n/a	
Var. to 4 Week RA	↓ -4%	0%	n/a	
YTD Unloads	↑ 100,690	92,103	0%	
Weekly Out of Car Time	↑ 9.3%	4.2%	-11%	
5. Shipments (YTD Tonnes 000)				
Vancouver	↑ 5,479	4,963	4%	
Prince Rupert	↑ 1,137	1,055	-6%	
Thunder Bay	↑ 2,046	1,909	-17%	
Total Western Canada	↑ 8,663	7,928	-3%	
6. Vessels as of 11/5/2017				
Vancouver	Vessel Line Up	↓ 16	22	-38%
	Vessels Cleared	↑ 14	11	0%
	Vessels Incoming	↑ 12	8	n/a
Pr. Rupert	Vessel Line Up	↑ 6	5	0%
	Vessels Cleared	↑ 3	2	0%
	Vessels Incoming	↓ 3	4	n/a

Note: Vessels incoming for the current week represents vessels forecasted to arrive in next grain week. Vessels incoming for the previous week represents the number of vessels that arrived in the current reporting week.

1. Stocks in Store: (Page 2)

- Country stocks decreased to 3.8 MMT in Week 13 utilizing 81% of the system's working capacity. Space in country elevators is fair.
- Total western port terminal stocks remained at 1.5 MMT in Week 13, utilizing 86% of the working capacity.

2. Country Deliveries (Page 2)

- Producer deliveries decreased to 941,300 tonnes.

3. Railway Car Supply: (Page 3)

- Railcar allocation plans are supplied by CN to Week 15 of the 2017-18 grain year (see page 3 for details).

4. Port Performance: (Page 4)

- Total western port unloads are 4% lower than the 4-week rolling average and 7% lower than Week 13 last year.
- West Coast unloads were 6,423 cars (Vancouver 5,268 and Prince Rupert 1,155), 5% lower than the 4-week rolling average and 2% lower than Week 13 last year.
- Thunder Bay terminals unloaded 2,164 cars, approximately equal to the 4-week rolling average and 18% lower than Week 13 last year.
- Year to date total western port unloads are approximately equal to the same period last year. The corresponding tonnage is also approximately equal.
- The total average terminal out of car time (OCT) increased to 9.3% from 4.2% in the previous week. The OCT time for Week 13 was 6% in Vancouver, 4% in Prince Rupert, and 22% in Thunder Bay.

5. Shipments: (Page 5)

- Year to date Western Canadian shipments from port terminal elevators at Week 13 are 3% lower than the same period last year and 3% lower than the 5-year average.

6. Vessels: (Page 5)

- Week 14 lineup at Vancouver decreased to a total of 16 vessels (The current one-year average at Vancouver is 22 vessels). Of the 16, 8 were at berth, 6 were anchored at English Bay, and 2 were anchored along the southern shore of Vancouver Island.
- Prince Rupert vessel count increased to a total of 6 vessels (The current one-year average at Prince Rupert is 4 vessels).
- Vessels cleared from Vancouver were 14, and from Prince Rupert were 3 in Week 14 of the 2017-18 crop year.

1. Stocks in Store

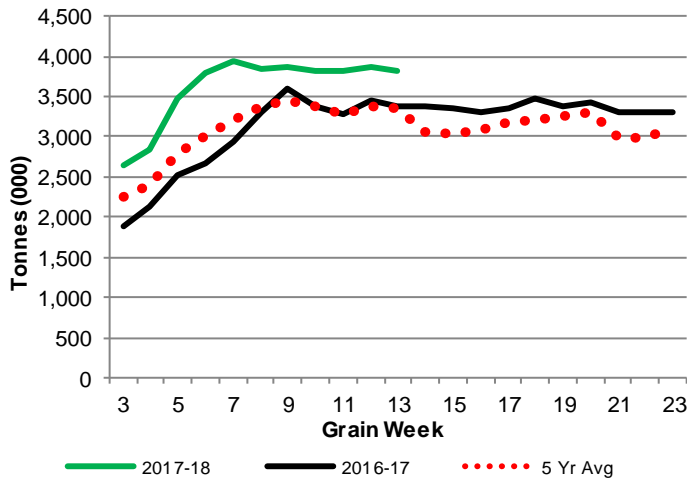
1-A1 Country Stocks ('000 tonnes) – Week 13

	MB	SK	AB	BC	Total
2017-18	887.3	1,889.7	1,019.1	24.4	3,820.5
2016-17	841.6	1,627.7	867.9	29.2	3,366.4
5 Yr Avg	806.2	1,610.6	915.9	28.3	3,360.9
Var % - LY	5%	16%	17%	-16%	13%
Var % - 5 Yr Avg	10%	17%	11%	-14%	14%
Storage Capacity	1,594.5	3,751.1	1,904.5	41.1	7,291.3
Estimated Working Capacity	1,036.4	2,438.2	1,237.9	26.7	4,739.3
17-18 % of Wkg Cap	86%	78%	82%	91%	81%

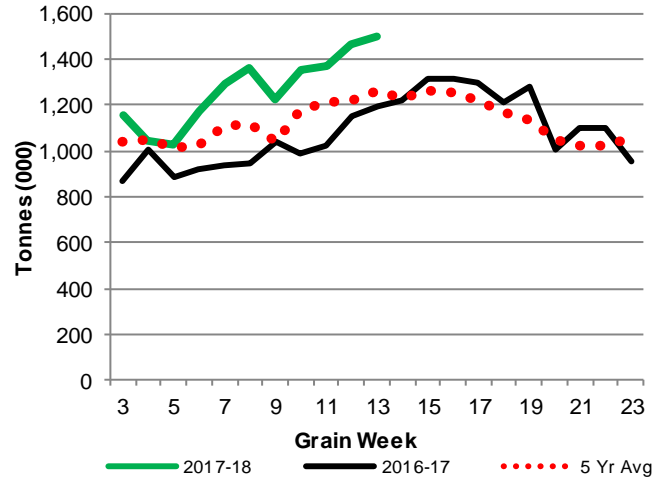
1-B1 Terminal Stocks ('000 tonnes) – Week 13

	West Coast	Churchill	Thunder Bay	Total
2017-18	786.3	29.5	686.4	1,502.2
2016-17	685.8	29.5	474.7	1,190.0
5 Yr Avg	627.0	52.5	583.1	1,262.7
Var % - LY	15%	0%	45%	26%
Var % - 5 Yr Avg	25%	-44%	18%	19%
Storage Capacity	1,187.5	140.0	1,157.5	2,485.0
Estimated Working Capacity	831.2	98.0	810.3	1,739.5
17-18 % of Wkg Cap	95%	30%	85%	86%

1-A2 Weekly Country Stocks in Store



1-B2 Weekly Terminal Stocks in Store

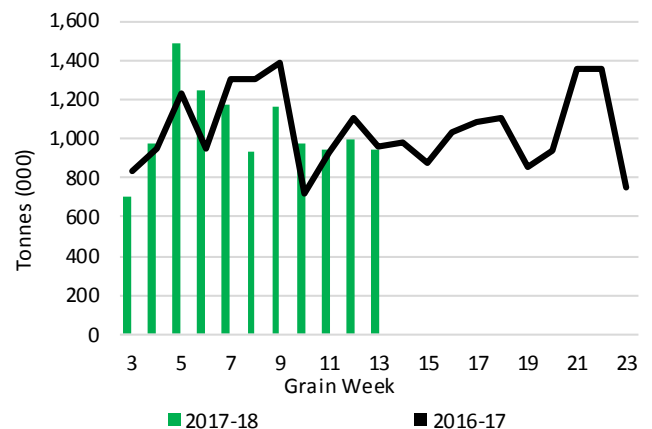


2. Country Deliveries

2-A Weekly Country Deliveries ('000 tonnes) - Week 13

	MB	SK	AB	BC	Total
2017-18	170.1	472.0	291.6	7.6	941.3
2016-17	170.2	482.3	296.5	6.1	955.1
4 Wk Avg	234.8	451.3	270.4	7.3	963.7
Var % to Last Year	0%	-2%	-2%	25%	-1%
Var % To 4 Wk Avg	-28%	5%	8%	4%	-2%

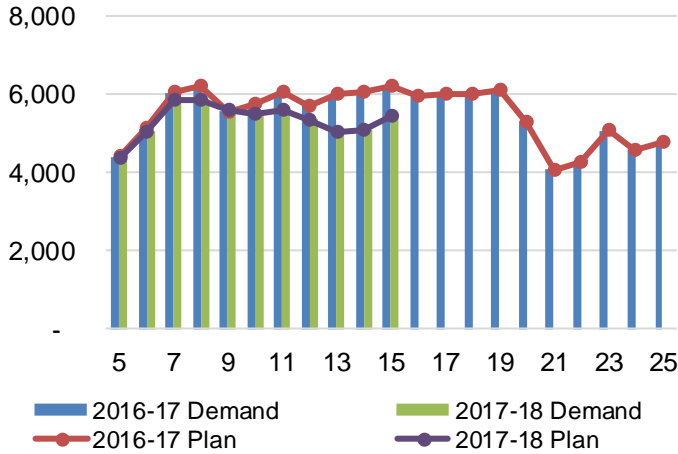
2-B 2017-18 Weekly Country Deliveries vs 2016-17



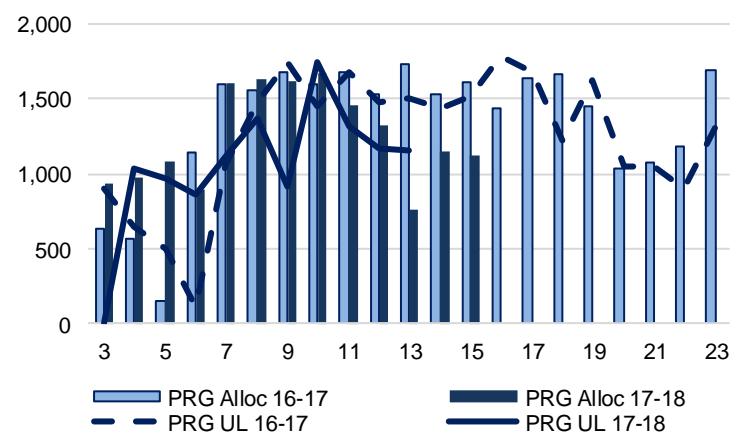
3. Railway Car Supply

Special Note to readers: CP discontinued publishing weekly railcar spotting plans in Week 12 of the 2014-15 crop year (GCRS Service Report). CN continues to publish a weekly plan and the graphs below reflect CN's plan to Week 15 of 2017-18. Note that the orders accepted do not necessarily reflect shipper demand, but rather the railways' acceptance of shippers' car orders. When both railways provide the order fulfillment data requested with the expansion of the GMP mandate, which was announced on February 3, 2014, a complete set of metrics will be presented.

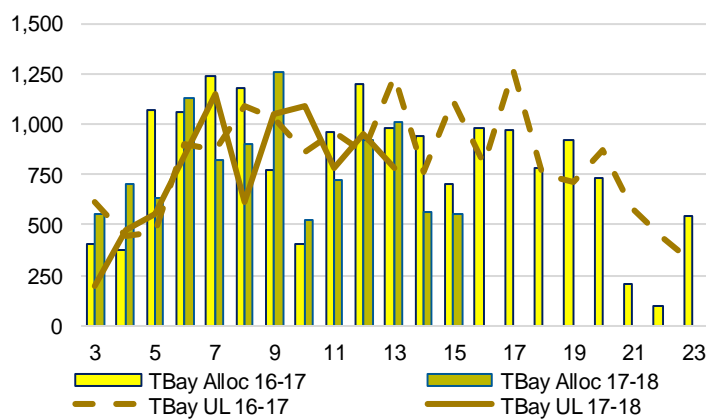
3-A: Canadian National Planned Car Allocation vs. Demand (# of Cars) To Week 15 2017-18 Crop Year



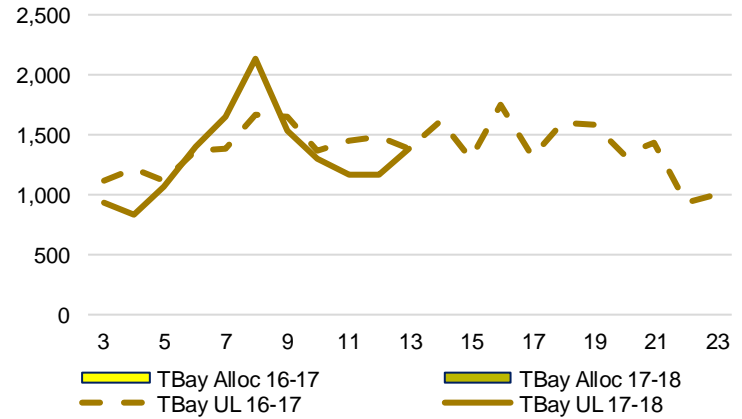
3-B3: Canadian National Planned Car Allocation to Western Ports Vs. Corridor Unloads at Port (# of Cars) – Prince Rupert



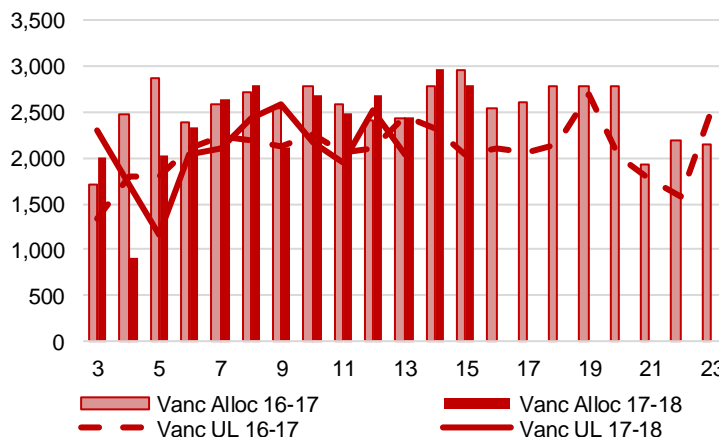
3-B1: Canadian National Planned Car Allocation to Western Ports Vs. Corridor Unloads at Port (# of Cars) – Thunder Bay



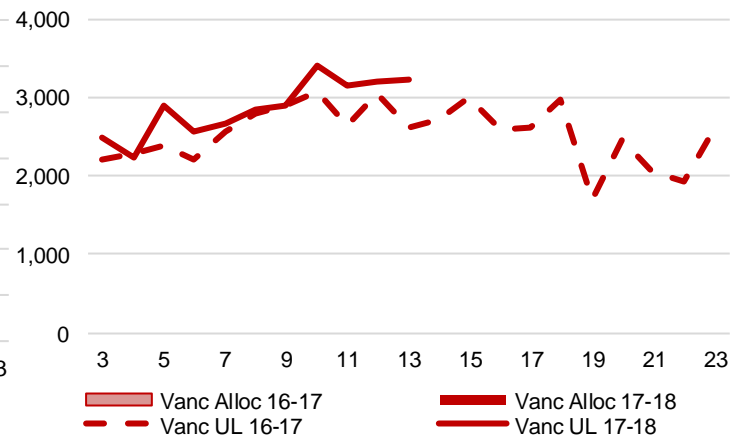
3-C1: Canadian Pacific Planned Car Allocation to Western Ports vs. Corridor Unloads at Port (# of Cars) – Thunder Bay



3-B2: Canadian National Planned Car Allocation to Western Ports Vs. Corridor Unloads at Port (# of Cars) – Vancouver



3-C2: Canadian Pacific Planned Car Allocation to Western Ports vs. Corridor Unloads at Port (# of Cars) – Vancouver



4. Port Performance

4-A Weekly Unloads by Port (Cars) – This Year for Week 13, 4-Week Rolling Average and Variances

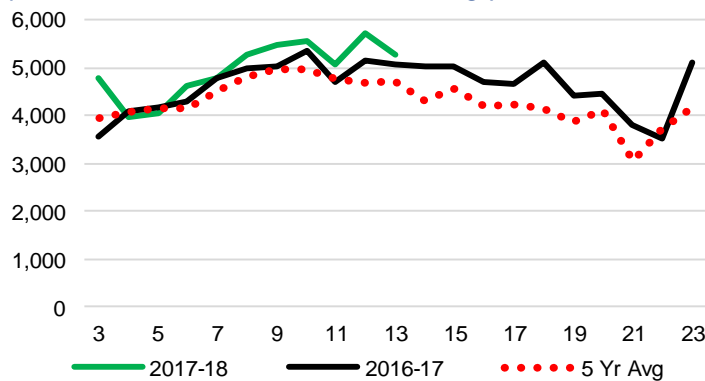
	Vancouver	Prince Rupert	West Coast	Thunder Bay	Churchill	Total
2017-18	5,268	1,155	6,423	2,164	-	8,587
2016-17	5,067	1,507	6,574	2,624	-	9,198
4 Wk Avg	5,409	1,349	6,758	2,155	-	8,912
Var % to Last Year	4%	-23%	-2%	-18%	n/a	-7%
Var % to 4 Wk Avg	-3%	-14%	-5%	0%	n/a	-4%

4-B Railcar Unloads and Tonnes – This Year to Date as of Week 13 and Variances

	Vancouver	Prince Rupert	West Coast	Thunder Bay	Churchill	Total
Total Cars						
2017-18	61,880	13,242	75,122	25,568	-	100,690
2016-17	58,154	14,764	72,918	27,728	-	100,646
5 Yr Avg	56,975	15,486	72,461	26,320	2,560	101,341
Var % to Last Year	6%	-10%	3%	-8%	n/a	0%
Var % to 5 Yr Avg	9%	-14%	4%	-3%	-100%	-1%
Total Tonnes						
2017-18	5,603,461	1,187,825	6,791,287	2,345,530	-	9,136,816
2016-17	5,250,798	1,332,913	6,583,711	2,547,353	-	9,131,065
5 Yr Avg	5,090,718	1,389,952	6,480,670	2,413,773	295,038	9,189,482
Var % to Last Year	7%	-11%	3%	-8%	n/a	0%
Var % to 5 Yr Avg	10%	-15%	5%	-3%	-100%	-1%

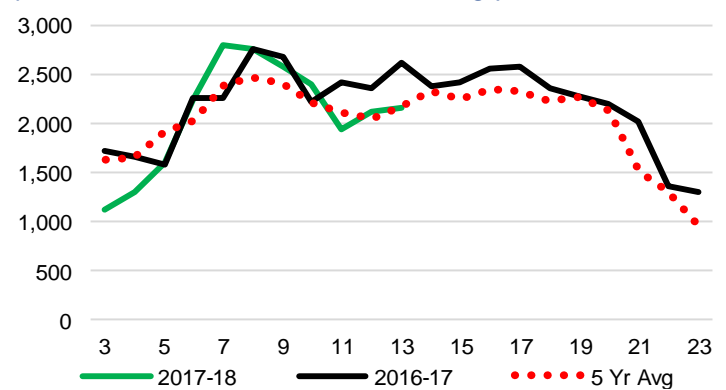
4-C Vancouver Unloads (# of Cars)

(This Year vs. Last Year and the 5-Year Average)



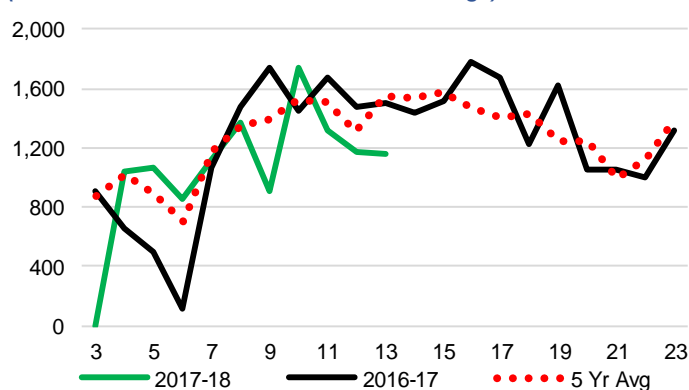
4-E Thunder Bay Unloads (# of Cars)

(This Year vs. Last Year and the 5-Year Average)

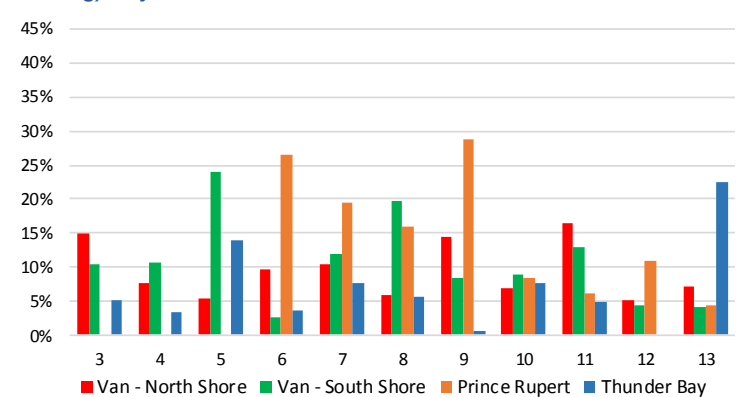


4-D Prince Rupert Unloads (# of Cars)

(This Year vs. Last Year and the 5-Year Average)



4-F Weekly Out of Car Time – (% of hours out of cars/total hours working) – by Port to Week 13



Out of car time is measured weekly and uses data from terminal elevators on the total number of hours the facilities are open & staffed (including overtime hours) and the corresponding number of hours that terminals have no rail cars available to unload. The measure is expressed as a percentage (hours without cars to the total number of hours working).

4-G Monthly Unloads (Cars) – This year vs. Last Year and the 5-Year Average to Week 13

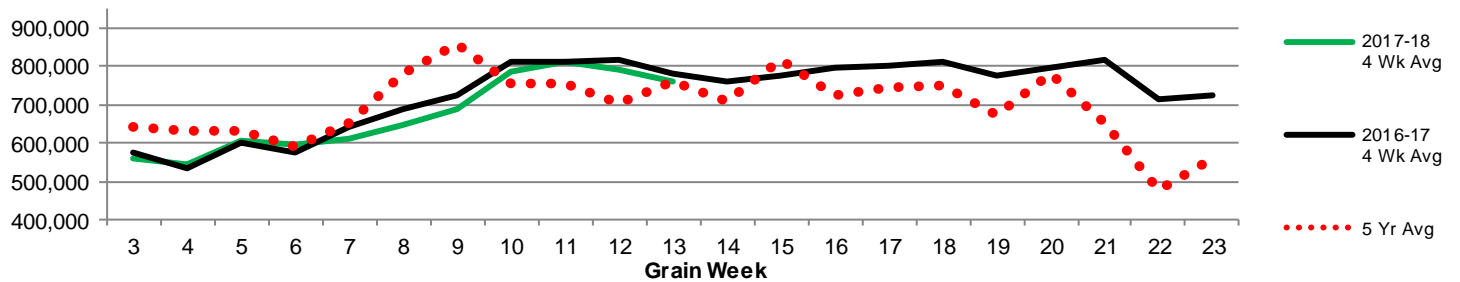
Months	Aug	Sep	Oct	Nov	Dec	Jan	Feb	Mar	Apr	May	Jun	Jul
Weeks	1-5	6-9	10-13	14-18	19-22	23-27	28-31	32-35	36-39	40-44	45-48	49-52
2017-18	30,257	34,784	35,649	-	-	-	-	-	-	-	-	-
2016-17	31,197	33,447	36,002	44,476	28,797	28,771	26,824	37,057	36,789	39,112	29,666	27,065
5 Yr Avg	34,389	33,768	35,137	40,806	26,709	23,919	22,985	32,448	31,653	36,037	26,863	25,033
Var % to Last Year	-3%	4%	-1%									
Var % to 5 Yr Avg	-12%	3%	1%									

5. Shipments

5-A Shipments from Port Terminals (Tonnes) – This Year as of Week 13 and Variance to Last Year

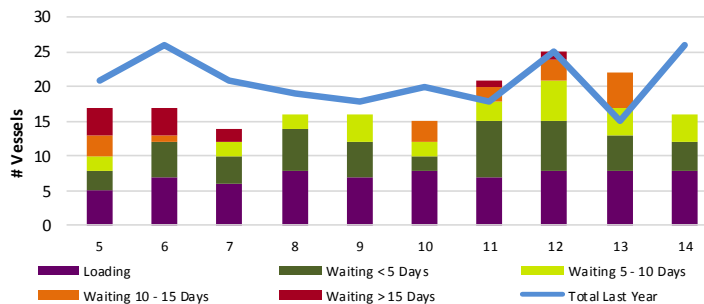
	Vancouver	Prince Rupert	West Coast	Thunder Bay	Churchill	Total
2017-18	5,479,133	1,137,124	6,616,257	2,046,483	-	8,662,740
2016-17	5,249,592	1,204,907	6,454,499	2,478,417	-	8,932,916
5 Year Avg	5,107,522	1,276,673	6,384,195	2,278,509	253,597	8,916,301
Var % to Last Year	4%	-6%	3%	-17%	n/a	-3%
Var % to 5 Year Avg	7%	-11%	4%	-10%	-100%	-3%

5-B Weekly Shipments (Tonnes) from Port Terminals - This year 4-Wk moving avg vs. last year 4-Wk moving avg and the 5-year avg

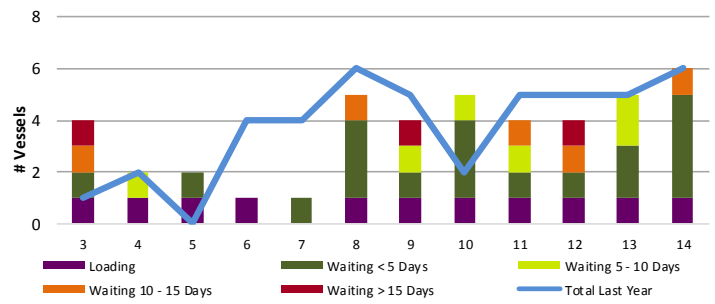


6. Vessels

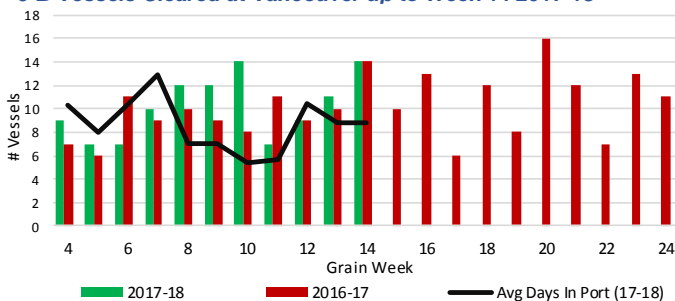
6-A Vessel lineup at Vancouver as of Week 14 2017-18



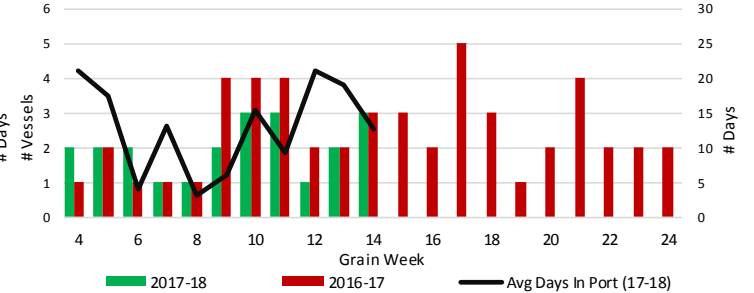
6-C Vessel lineup at Prince Rupert as of Week 14 2017-18



6-B Vessels Cleared at Vancouver up to Week 14 2017-18



6-D Vessels Cleared at Prince Rupert up to Week 14 2017-18



Note: To determine Avg Days in Port, Quorum first establishes which vessels cleared port in each specific grain week. Then, the number of days each cleared vessel spent in port is calculated by subtracting the date of arrival from the date of departure. Lastly, an average of these days is produced for the week, which yields Avg Days in Port. The measure uses vessel data provided by the BC Chamber of Shipping.